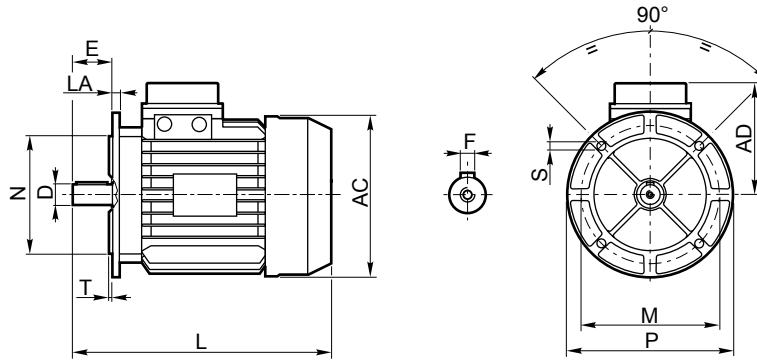


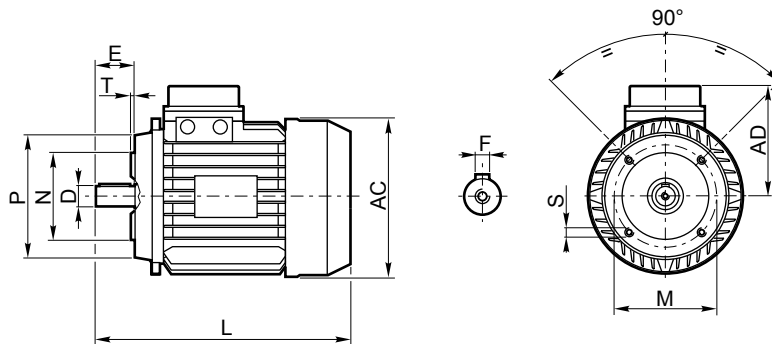
MOTORI ELETTRICI / *ELECTRIC MOTORS* / ELEKTROMOTOREN
 MOTEURS ELECTRIQUES / *MOTORES ELECTRICOS* / MOTORES ELETRICOS

Motore elettrico trifase / *Threephase electric motor* / Drehstrommotor
 Moteur électrique triphasé / *Motor eléctrico trifásico* / Motor elétrico trifásico

B5



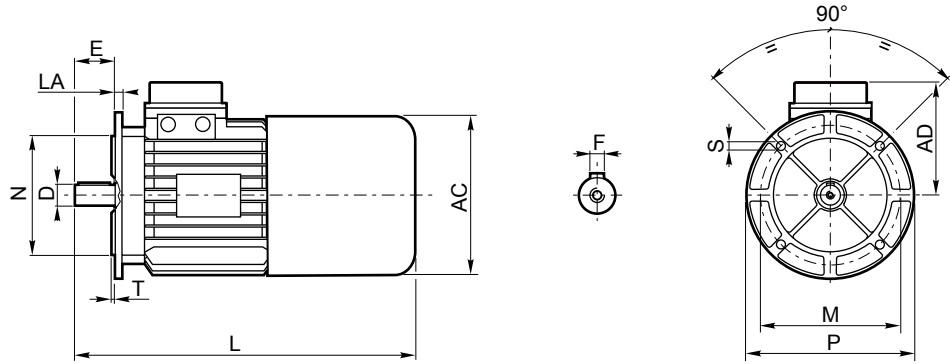
B14



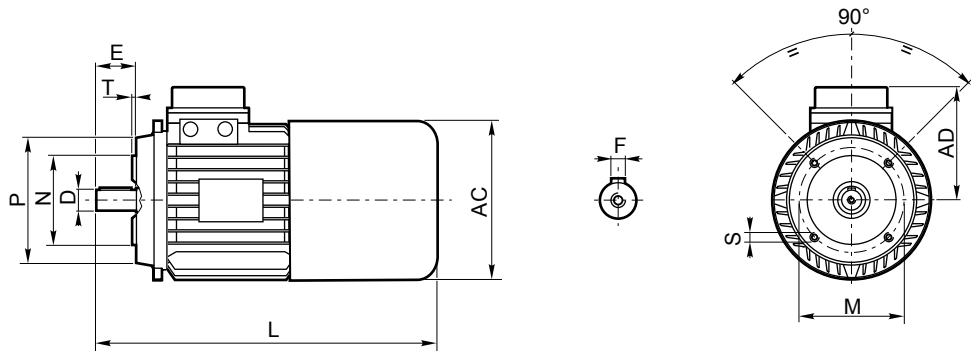
n° poli / poles n.						Grandezza Size	B5 - B14						B5					B14					
2		4		6			D	E	F	L	AD	AC	P	N	M	T	S	LA	P	N	M	T	S
kW	Kg	kW	Kg	kW	Kg																		
0.185	4.1	0.135	4	—	—	63	11	23	4	208	113	123	140	95	115	3	10	10	90	60	75	2.5	M5
0.25	4.4	0.185	4.6	0.12	5	71	14	30	5	242	125	147	160	110	130	3	9	9.5	105	70	85	2.5	M6
0.37	5.8	0.25	6	0.185	6.6		0.25	7.7															
0.55	6.5	0.37	6.6	0.25	7.7	80	19	40	6	279	133	165	200	130	165	3.5	12	10.5	120	80	100	3	M6
0.75	8.4	0.55	8	0.37	8.3		0.55	10															
1.1	9.5	0.75	9.5	0.55	10	90S																	
1.5	12.3	1.1	12.4	0.75	12					305													
1.85	12.8	—	—	—	—	90L	24	50	8		148	181	200	130	165	3	11.5	11	140	95	115	3	M8
2.2	15	1.5	14.5	1.1	14.3					330													
—	—	1.85	16.5	—	—	100	28	60	8	370	156	198	250	180	215	2.5	14	15	160	110	130	3.5	M8
3	19.7	2.2	18.5	1.5	19																		
4	24	3	21.4			112	28	60	8	388	173	222	250	180	215	2.5	14	11.5	160	110	130	3.5	M8
5.5	31.6	4	31.3	2.2	30																		
7.5	34.5	5.5	42	3	40	132S				460													
—	—	7.5	52.5	4	46.4																		
—	—	9.2	56.5	5.5	52.5	132	38	80	10	500	189	264	300	230	265	4	14	15	200	130	165	4	M10
11	52.5	11	79.2	7.5	78																		
15	59	—	—	—	—	160	42	110	12	610													
18.5	98	15	97.5	11	110						235	317	350	250	300	5	18	15	250	180	215	5	M12
22	109	—	—	—	—	160L				654													
—	—	18.5	154	15	140																		
—	—	22	160	—	—	180	48	110	14	710	248	320	350	250	300	5	19	17					

Motore elettrico trifase autofrenante / *Threephase electric motor with brake* / Drehstrommotor
 Moteur électrique triphasé frein / Motor eléctrico trifásico autofrenante / motor eléctrico trifásico autofrenante

B5



B14



n°poli / poles n.						Grandezza Size	B5 - B14						B5					B14					
2		4		6			D	E	F	L	AD	AC	P	N	M	T	S	LA	P	N	M	T	S
0.185	5.1	0.135	5	—	—	63	11	23	4	256	113	123	140	95	115	3	10	10	90	60	75	2.5	M5
0.25	5.4	0.185	5.7	0.12	6.5		14	30	5	286	125	147	160	110	130	3	9	9.5	105	70	85	2.5	M6
0.37	7.1	0.25	7.5	0.185	7.7	71	19	40	6	332	133	165	200	130	165	3.5	12	10.5	120	80	100	3	M6
0.55	7.8	0.37	8	0.25	9.2		24	50	8	357	148	181	200	130	165	3	11.5	11	140	95	115	3	M8
0.75	10.6	0.55	10.5	0.37	10.5	80	28	60	8	442	156	198	250	180	215	2.5	14	15	160	110	130	3.5	M8
1.1	11.7	0.75	12	0.55	12.2		28	60	8	447	171	222	250	180	215	2.5	14	11.5	160	110	130	3.5	M8
1.5	14.5	1.1	14.5	0.75	14	90S	38	80	10	534	191	264	300	230	265	4	14	15	200	130	165	4	M10
1.85	15	—	—	—	—		90L	42	110	12	574	235	317	350	250	300	5	18	15	250	180	215	5
2.2	17.3	1.5	16.9	1.1	16.7	100		48	110	14	770	235	317	350	250	300	5	18	15	250	180	215	5
—	—	1.85	18.5	—	—		112	48	110	14	805	235	317	350	250	300	5	18	15	250	180	215	5
3	23	2.2	21.5	1.5	22.5	132S		48	110	14	870	235	352	350	250	300	5	19	17				
4	27.5	3	24.9	—	—		132	48	110	14	870	235	352	350	250	300	5	19	17				
5.5	35.5	4	34.6	2.2	33.7	160		48	110	14	870	235	352	350	250	300	5	19	17				
7.5	50	5.5	49.5	3	44.5		160L	48	110	14	870	235	352	350	250	300	5	19	17				
—	—	7.5	60	4	54.2	180		48	110	14	870	235	352	350	250	300	5	19	17				
—	—	9.2	63.9	5.5	60		180	48	110	14	870	235	352	350	250	300	5	19	17				
11	79	11	86.2	7.5	85	180		48	110	14	870	235	352	350	250	300	5	19	17				
15	93	—	—	—	—		180	48	110	14	870	235	352	350	250	300	5	19	17				
—	—	15	104.5	11	117	180		48	110	14	870	235	352	350	250	300	5	19	17				
22	120	—	—	—	—		180	48	110	14	870	235	352	350	250	300	5	19	17				
—	—	18.5	154	15	140	180		48	110	14	870	235	352	350	250	300	5	19	17				
—	—	22	160	—	—		180	48	110	14	870	235	352	350	250	300	5	19	17				