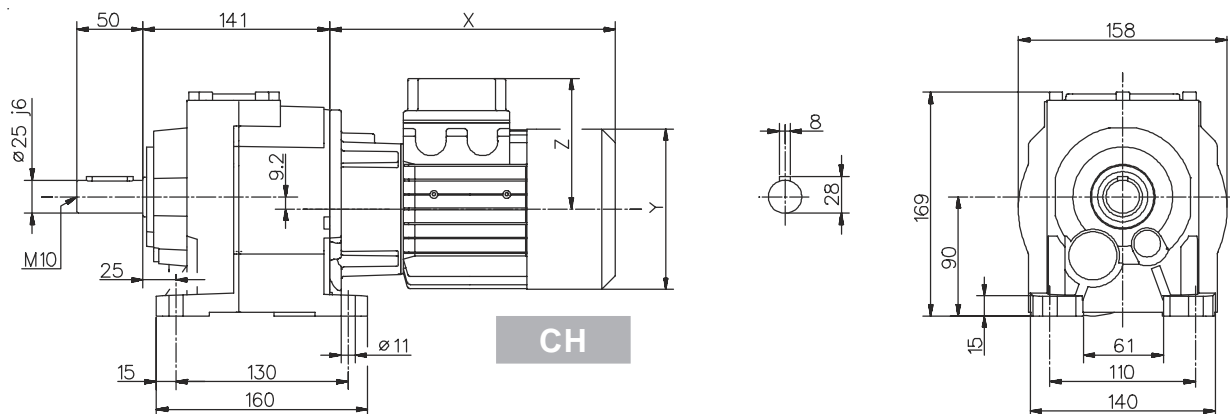
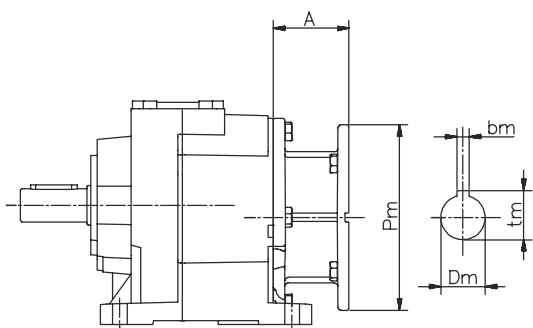


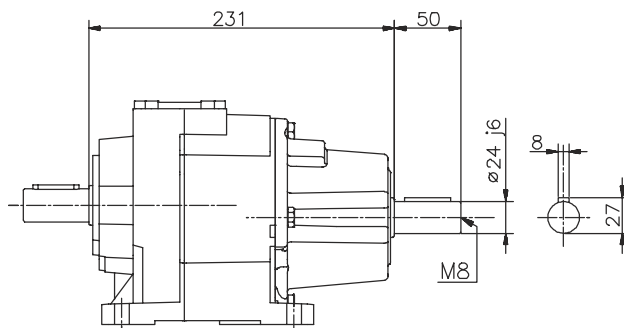
032/..3 **Dimensioni / Dimensions / Abmessungen / Encombresments / Dimensiones**



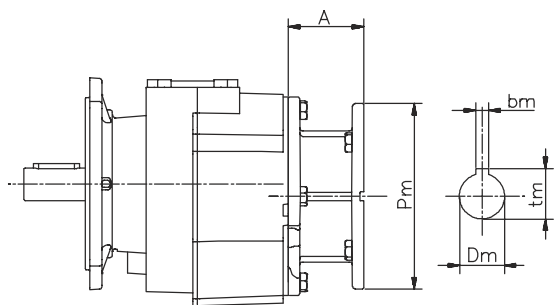
CH



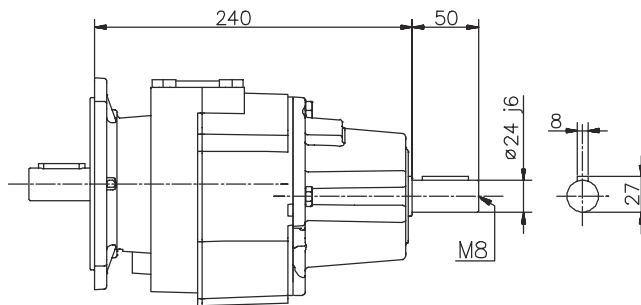
H



IH



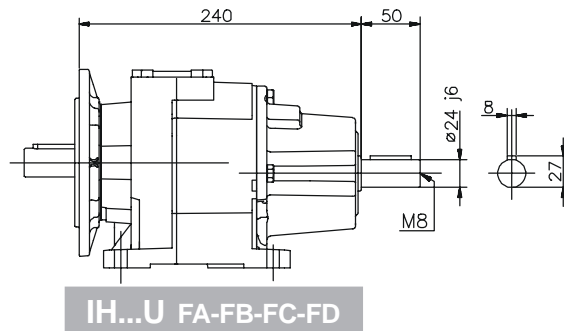
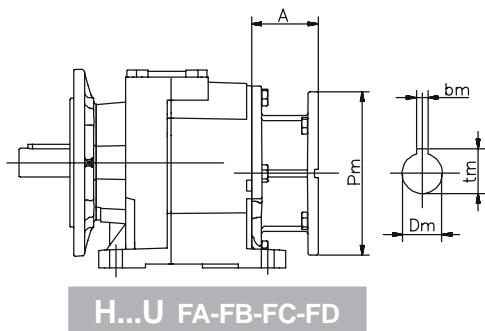
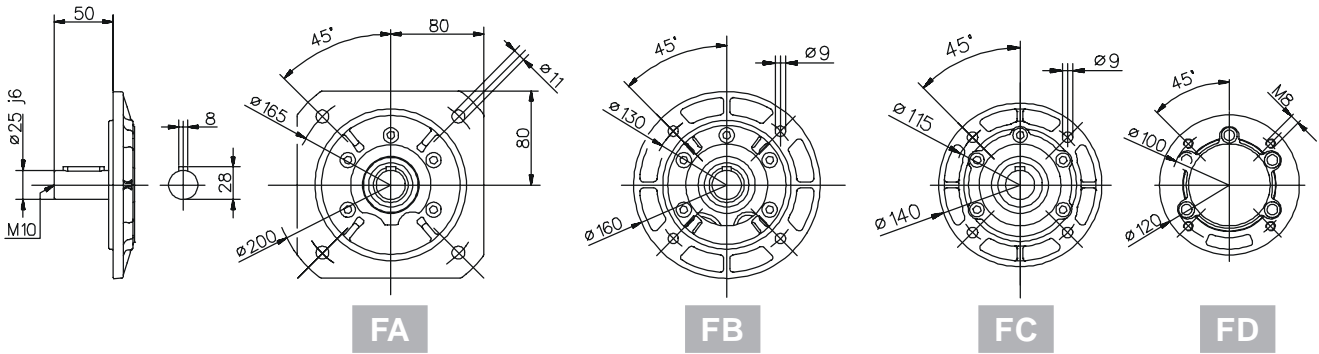
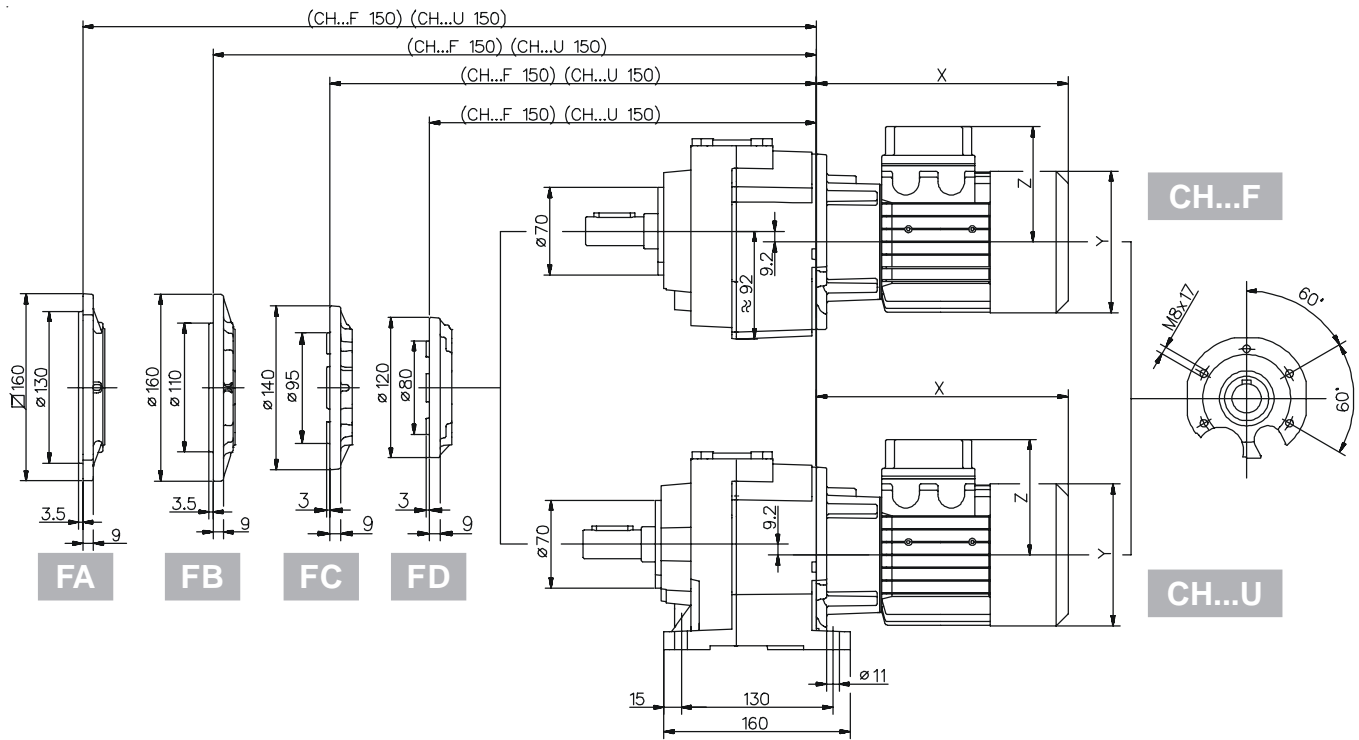
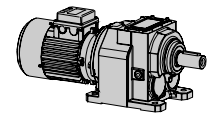
H...F FA-FB-FC-FD

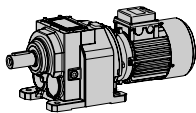


IH...F FA-FB-FC-FD

030	IH	PAM		Motore normale / Standard motor / Normaler Motor / Moteur normal / Motor normal				Motore autofrenante / Brake motor / Bremsmotor Moteur frein / Motor-freno			
	~Kg	A	~Kg	X	Y	Z	~Kg	X	Y	Z	~Kg
63	12.2	57	9.1	215	121	104	12.6	273	121	119	14.1
71		69	9.5	241	139	112	13.5	305	139	128	15.7
80		90	10.1	268	158	122	18.2	341	158	137	21.7
90s		90	10.1	296	173	130	22.1	373	173	130	27.6
90l		90	10.1	321	173	130	24.1	398	173	130	29.6
100		105	14.4	333	191	139	29.6	415	191	139	35.1
112		105	14.4	351	211	154	41.1	448	211	154	50.8

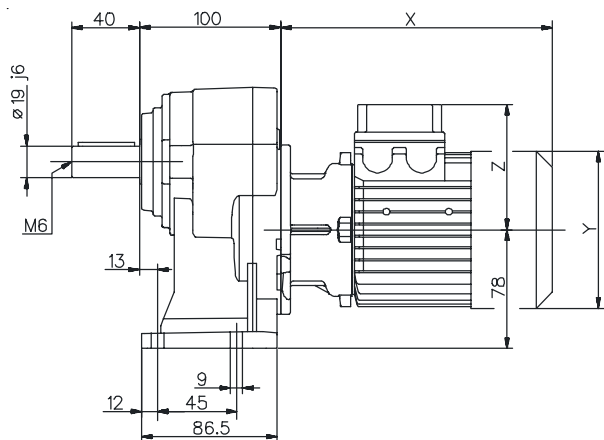
Per le dimensioni relative alla zona attacco motore (Pm, Dm, bm, tm) fare riferimento alla tabella di pag. 134.
 For the dimensions concerning the motor connection area (Pm, Dm, bm, tm) please refer to the table shown at page 134.
 Zu den Abmessungen des Motoranschlußflansches (Pm, Dm, bm, tm) siehe Tabelle auf Seite 134.
 Pour les dimensions concernant la zone de montage du moteur (Pm, Dm, bm, tm) lire SVP le tableau à la page 134.
 Para las magnitudes correspondientes a la zona del motor (Pm, Dm, bm, tm) consulte la tabla de la página 134.



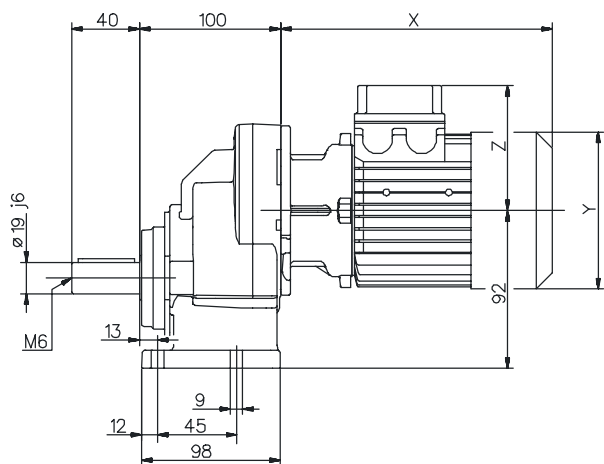
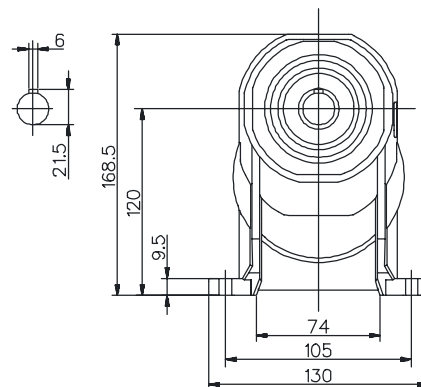


041

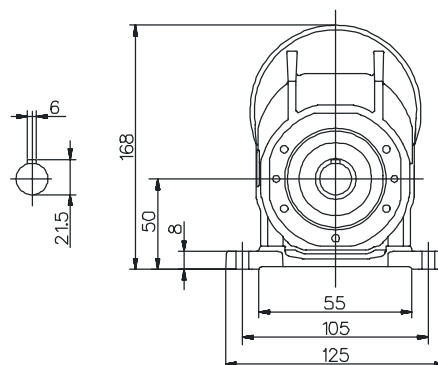
Dimensioni / Dimensions / Abmessungen / Encombremets / Dimensiones



CH

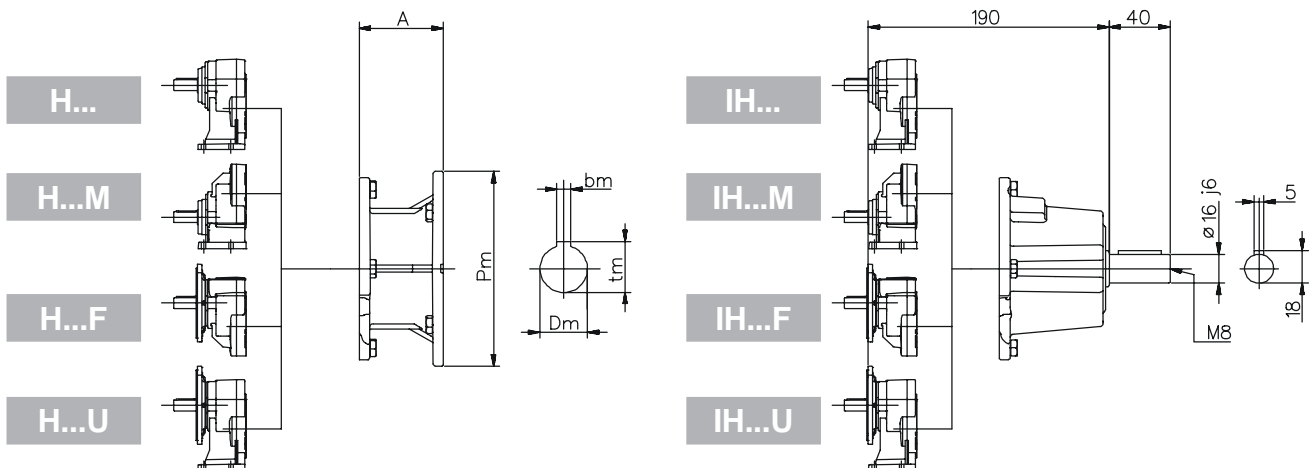
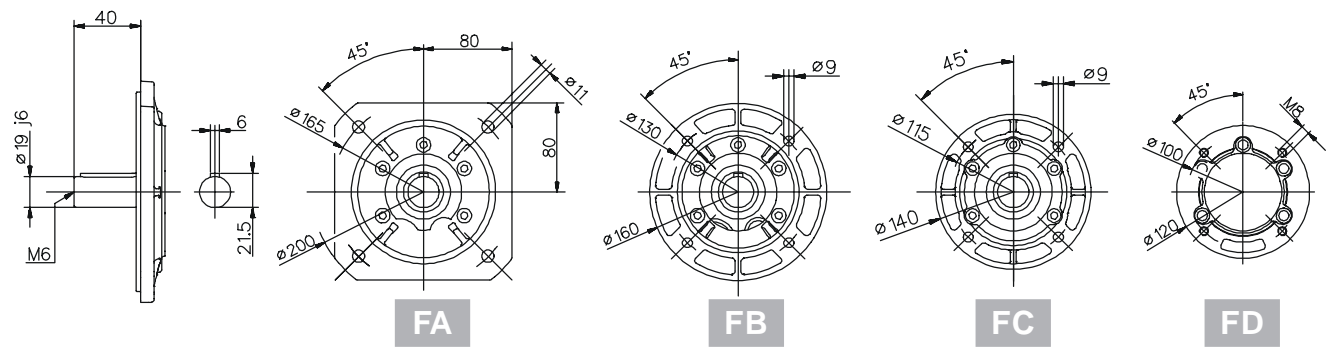
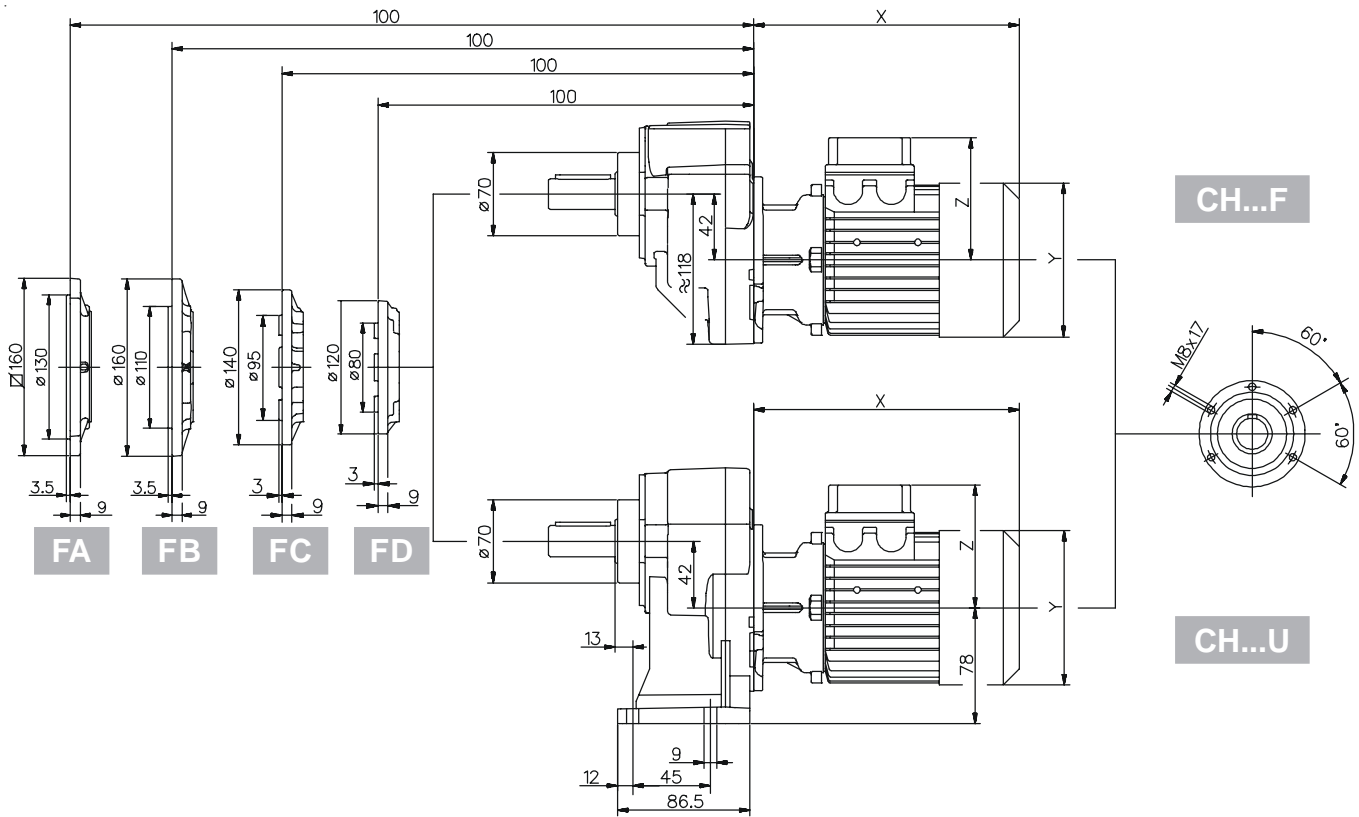
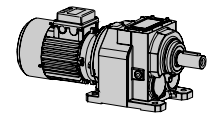


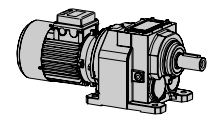
CH...M



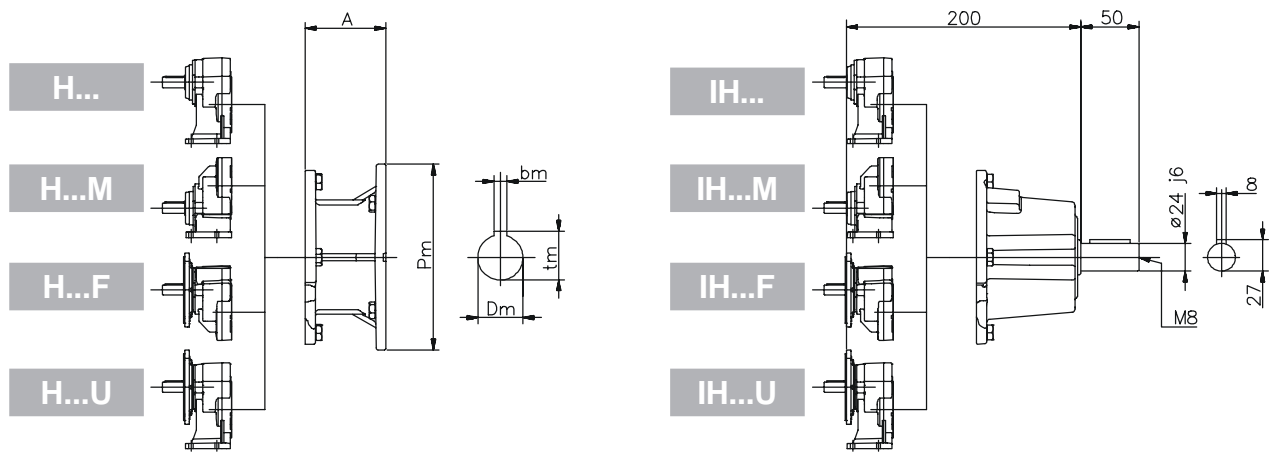
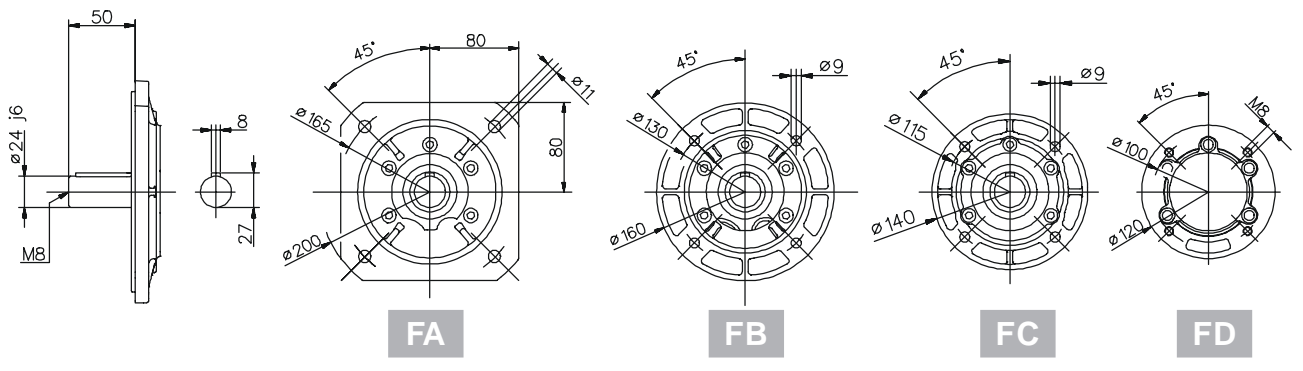
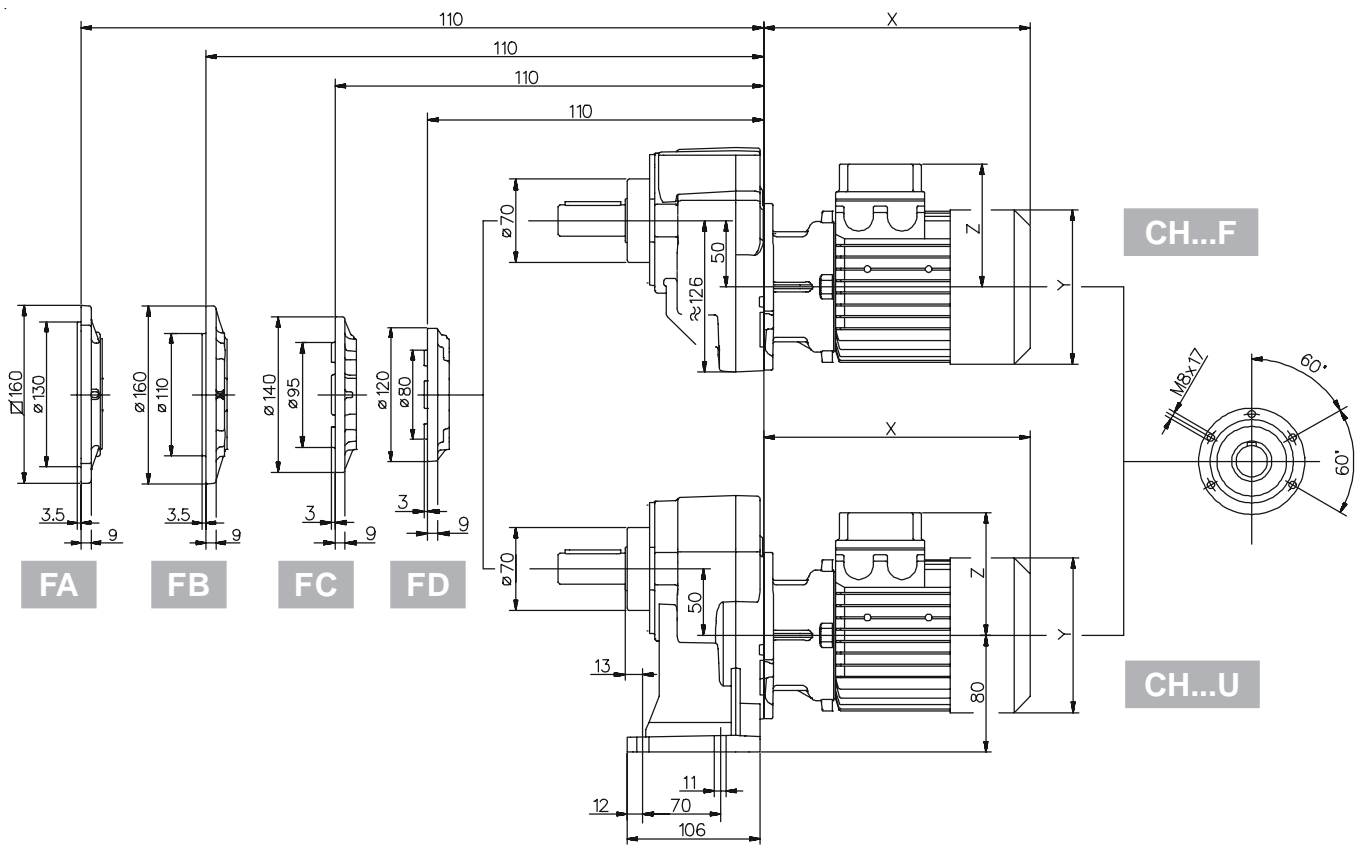
041	IH	PAM		Motore normale / Standard motor / Normaler Motor / Moteur normal / Motor normal				Motore autofrenante / Brake motor / Bremsmotor Moteur frein / Motor-freno			
	~Kg	A	~Kg	X	Y	Z	~Kg	X	Y	Z	~Kg
71	7.9	69	5.2	241	139	112	9.2	305	139	128	11.4
80		90	5.8	268	158	122	13.9	341	158	137	17.4
90s		90	5.8	296	173	130	17.8	373	173	130	23.3
90I		90	5.8	321	173	130	19.8	398	173	130	25.3

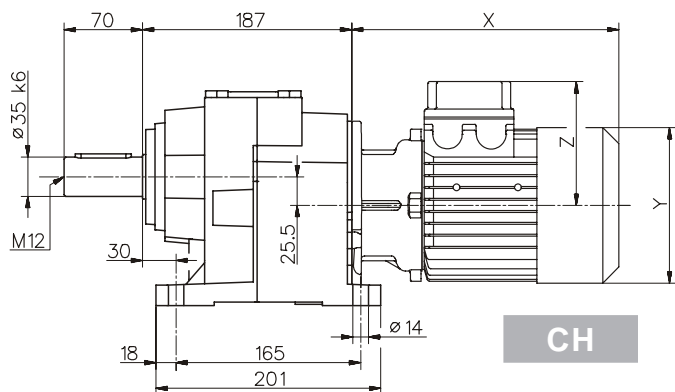
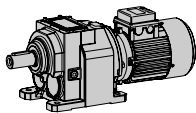
Per le dimensioni relative alla zona attacco motore (Pm, Dm, bm, tm) fare riferimento alla tabella di pag. 134.
 For the dimensions concerning the motor connection area (Pm, Dm, bm, tm) please refer to the table shown at page 134.
 Zu den Abmessungen des Motoranschlußflansches (Pm, Dm, bm, tm) siehe Tabelle auf Seite 134.
 Pour les dimensions concernant la zone de montage du moteur (Pm, Dm, bm, tm) lire SVP le tableau à la page 134.
 Para las magnitudes correspondientes a la zona del motor (Pm, Dm, bm, tm) consulte la tabla de la página 134.



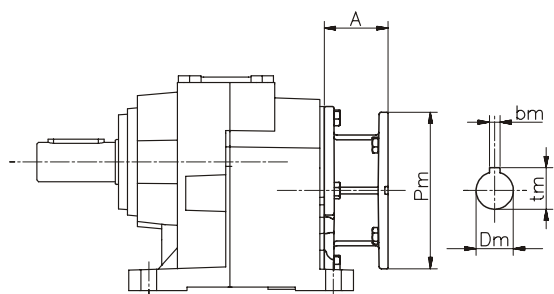
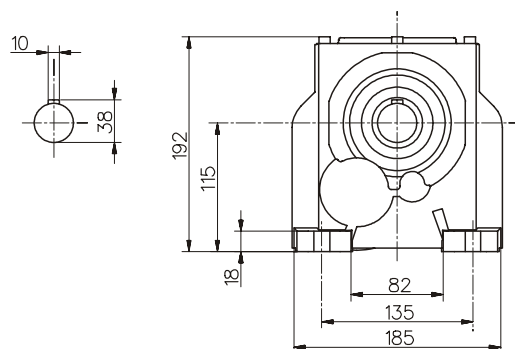


Dimensioni / Dimensions / Abmessungen / Encombremets / Dimensiones 051

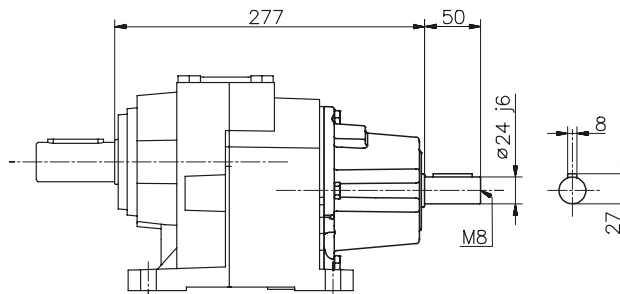




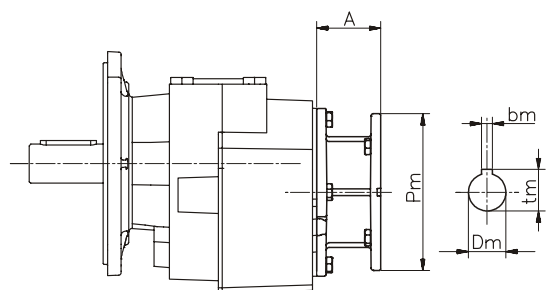
CH



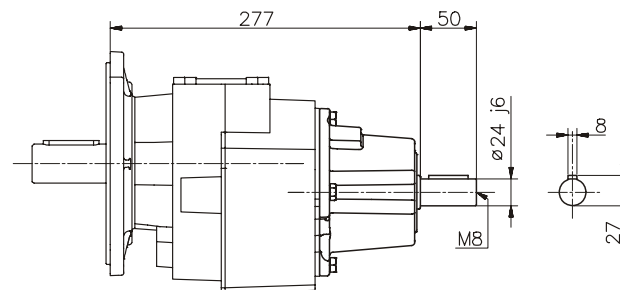
H



IH



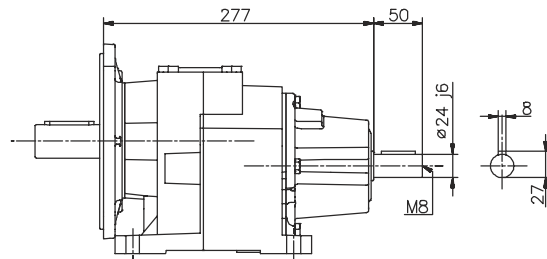
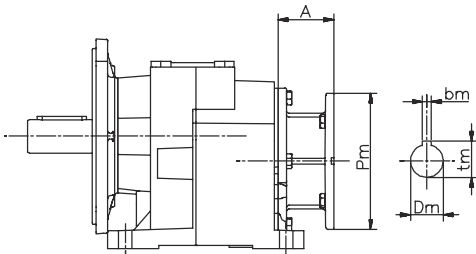
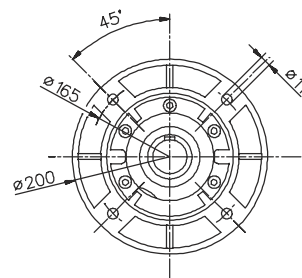
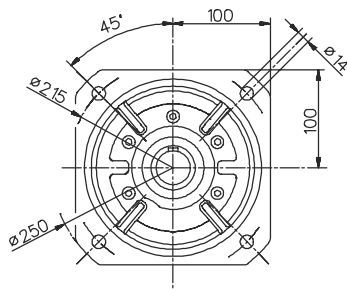
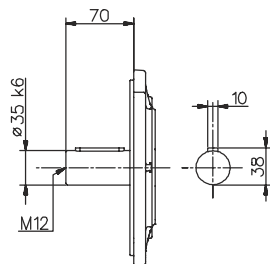
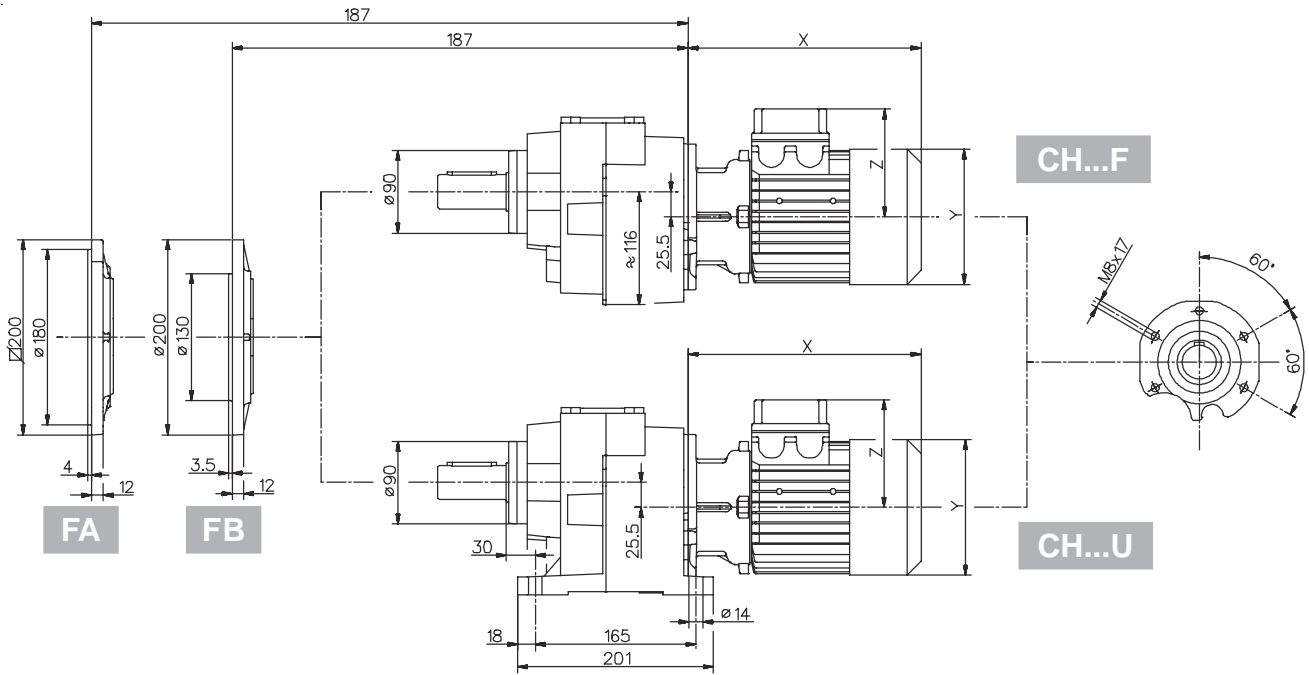
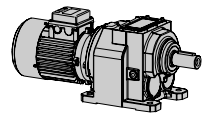
H...F FA-FB

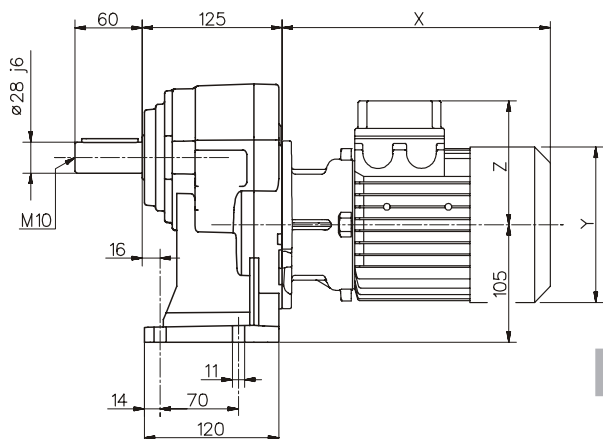
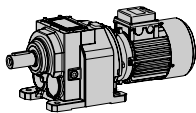


IH...F FA-FB

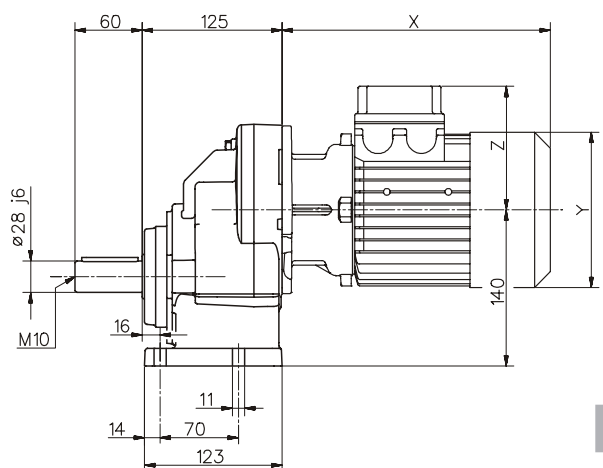
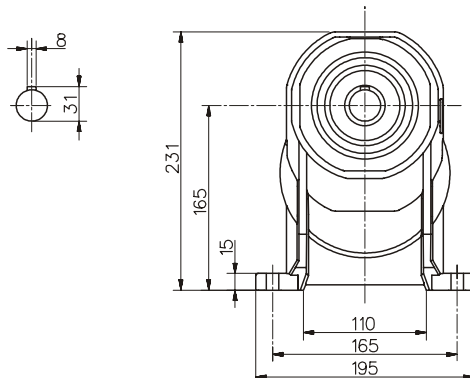
050	IH	PAM		Motore normale / Standard motor / Normaler Motor / Moteur normal / Motor normal			Motore autofrenante / Brake motor / Bremsmotor / Moteur frein / Motor-freno				
	~Kg	A	~Kg	X	Y	Z	~Kg	X	Y	Z	~Kg
63	20,4	57	17,3	215	121	104	20,8	273	121	119	22,3
71		69	17,7	241	139	112	21,7	305	139	128	23,9
80		90	18,3	268	158	122	26,4	341	158	137	29,9
90s		90	18,3	296	173	130	30,3	373	173	130	35,8
90l		90	18,3	321	173	130	32,3	398	173	130	37,8
100		105	22,6	333	191	139	37,8	415	191	139	43,3
112		105	22,6	351	211	154	49,3	448	211	154	59

Per le dimensioni relative alla zona attacco motore (Pm, Dm, bm, tm) fare riferimento alla tabella di pag. 134.
 For the dimensions concerning the motor connection area (Pm, Dm, bm, tm) please refer to the table shown at page 134.
 Zu den Abmessungen des Motoranschlußflansches (Pm, Dm, bm, tm) siehe Tabelle auf Seite 134.
 Pour les dimensions concernant la zone de montage du moteur (Pm, Dm, bm, tm) lire SVP le tableau à la page 134.
 Para las magnitudes correspondientes a la zona del motor (Pm, Dm, bm, tm) consulte la tabla de la página 134.

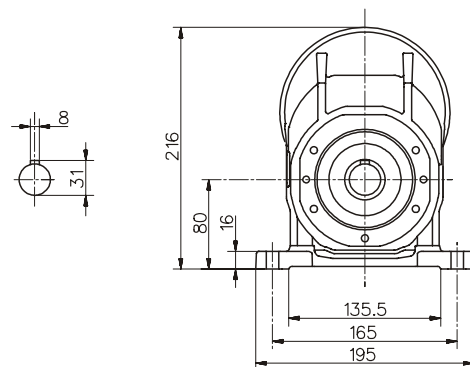




CH

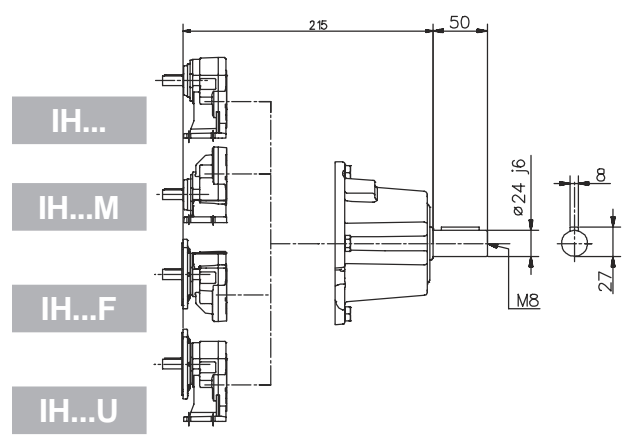
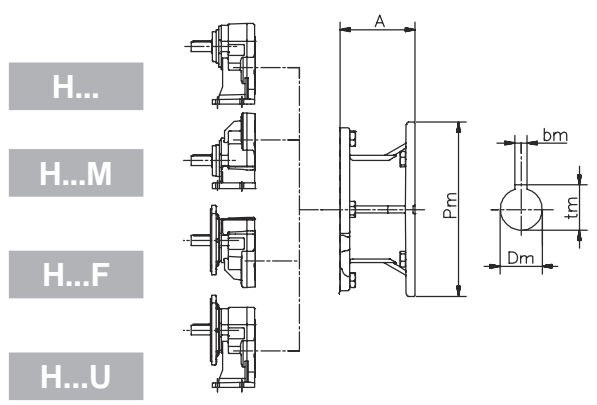
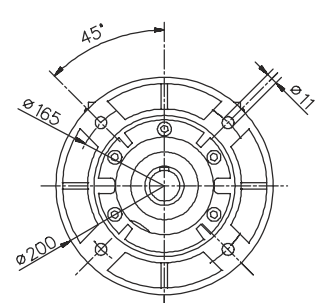
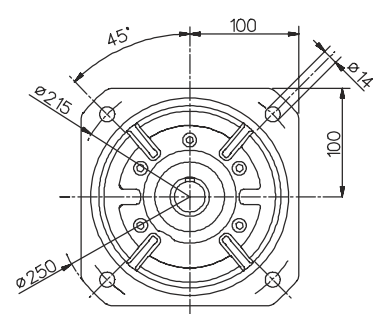
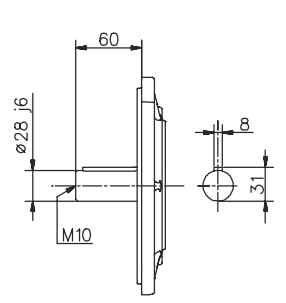
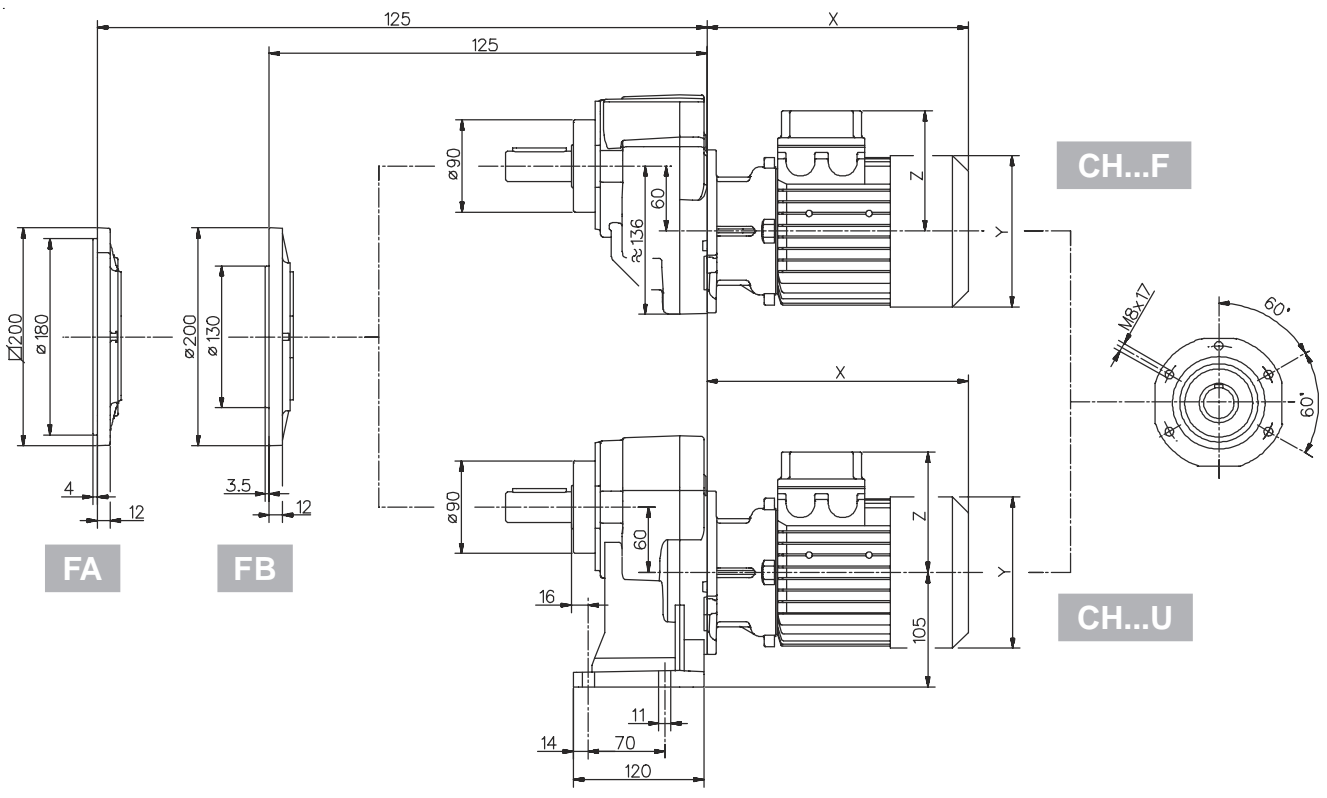
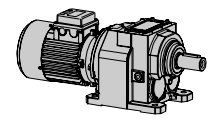


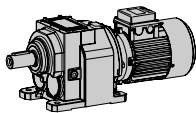
CH...M



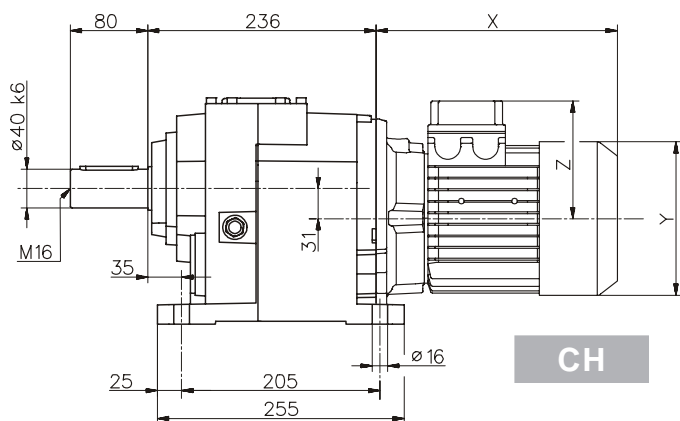
061	IH	PAM		Motore normale / Standard motor / Normaler Motor / Moteur normal / Motor normal				Motore autofrenante / Brake motor / Bremsmotor Moteur frein / Motor-freno			
	~Kg	A	~Kg	X	Y	Z	~Kg	X	Y	Z	~Kg
80	12	90	9.9	268	158	122	18	341	158	137	21.5
90s		90	9.9	296	173	130	21.9	373	173	130	27.4
90l		90	9.9	321	173	130	23.9	398	173	130	29.4
100		105	14.2	333	191	139	29.4	415	191	139	34.9
112		105	14.2	351	211	154	40.9	448	211	154	50.6

Per le dimensioni relative alla zona attacco motore (Pm, Dm, bm, tm) fare riferimento alla tabella di pag. 134.
 For the dimensions concerning the motor connection area (Pm, Dm, bm, tm) please refer to the table shown at page 134.
 Zu den Abmessungen des Motoranschlußflansches (Pm, Dm, bm, tm) siehe Tabelle auf Seite 134.
 Pour les dimensions concernant la zone de montage du moteur (Pm, Dm, bm, tm) lire SVP le tableau à la page 134.
 Para las magnitudes correspondientes a la zona del motor (Pm, Dm, bm, tm) consulte la tabla de la página 134.

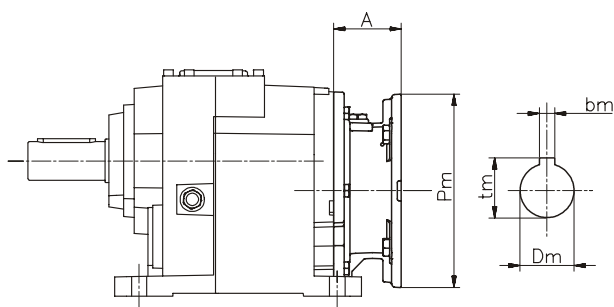
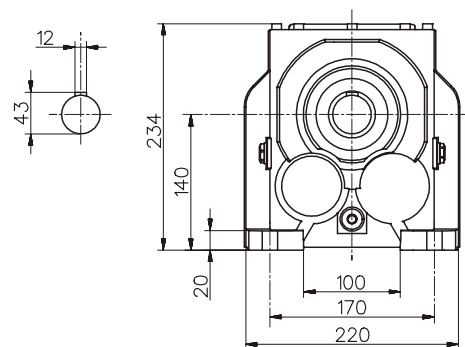




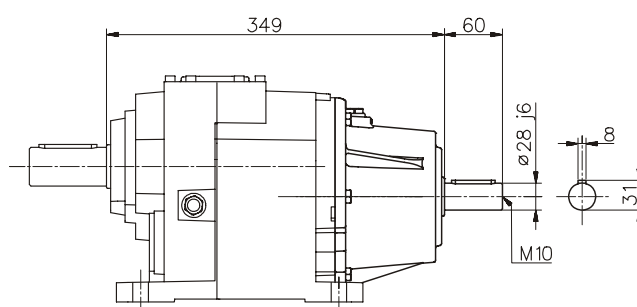
062/..3 Dimensioni / Dimensions / Abmessungen / Encombremets / Dimensiones



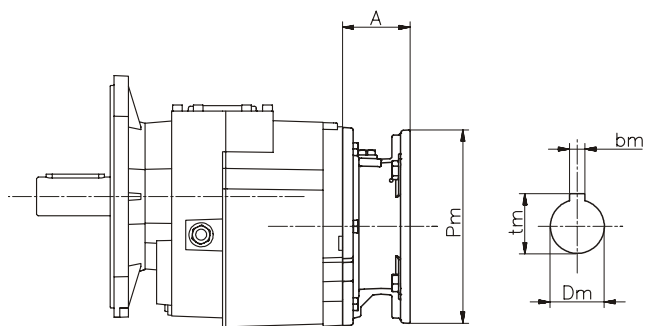
CH



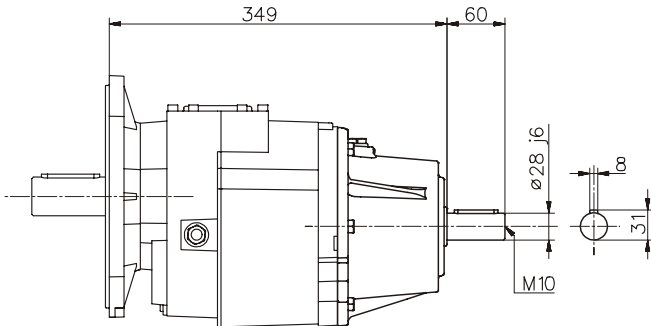
H



IH



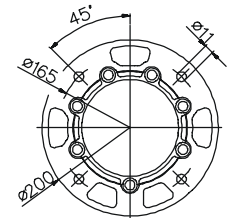
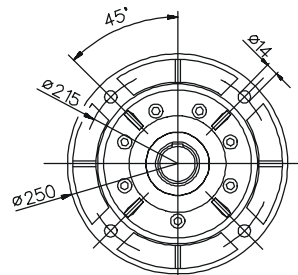
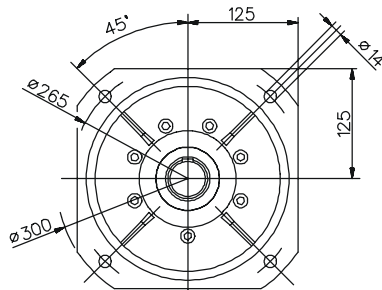
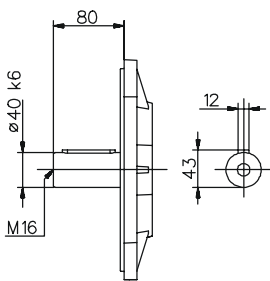
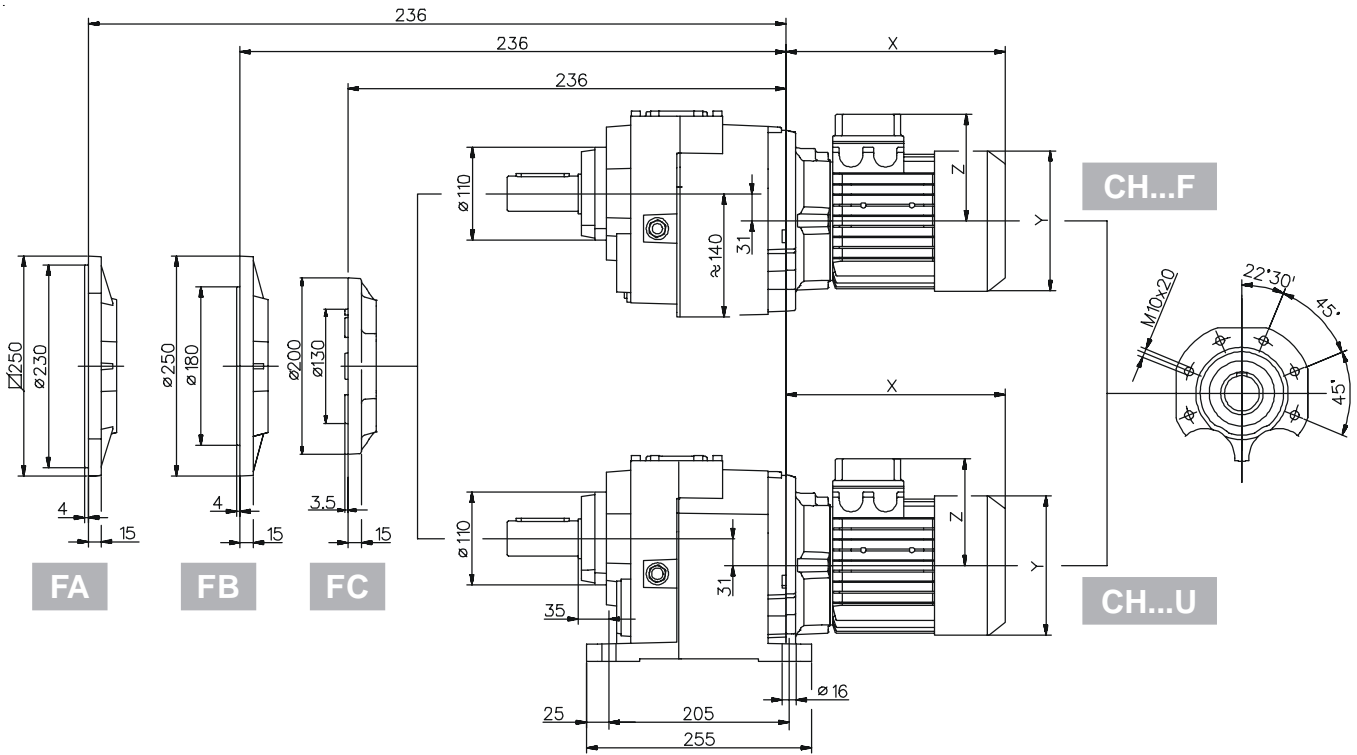
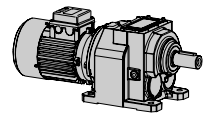
H...F FA-FB-FC



IH...F FA-FB-FC

060	IH	PAM		Motore normale / Standard motor / Normaler Motor / Moteur normal / Motor normal			Motore autofrenante / Brake motor / Bremsmotor / Moteur frein / Motor-freno				
	~Kg	A	~Kg	X	Y	Z	~Kg	X	Y	Z	~Kg
71	35,2	49	29,1	221	139	112	32,7	285	139	128	34,9
80		70	31,2	248	158	122	37,8	321	158	137	41,3
90s		70	31,2	276	173	130	40,2	353	173	130	45,7
90l		70	31,2	301	173	130	41,7	378	173	130	47,2
100		85	33,3	335	191	139	46,8	417	191	139	52,3
112		85	33,3	356	211	154	58,2	453	211	154	67,9
132s		110	36	396	249	194	72,2	495	249	194	82,5
132m		110	36	443	249	194	83,8	547	249	194	98,5

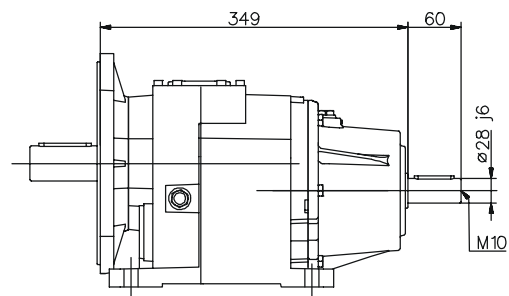
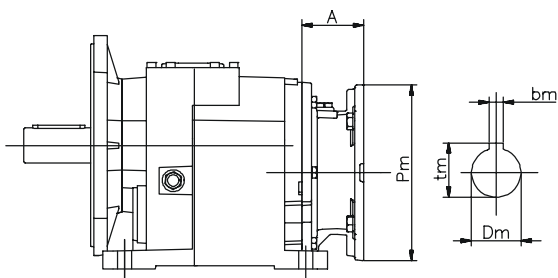
Per le dimensioni relative alla zona attacco motore (Pm, Dm, bm, tm) fare riferimento alla tabella di pag. 134.
 For the dimensions concerning the motor connection area (Pm, Dm, bm, tm) please refer to the table shown at page 134.
 Zu den Abmessungen des Motoranschlußflansches (Pm, Dm, bm, tm) siehe Tabelle auf Seite 134.
 Pour les dimensions concernant la zone de montage du moteur (Pm, Dm, bm, tm) lire SVP le tableau à la page 134.
 Para las magnitudes correspondientes a la zona del motor (Pm, Dm, bm, tm) consulte la tabla de la página 134.



FA

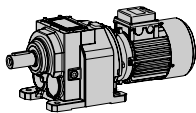
FB

FC



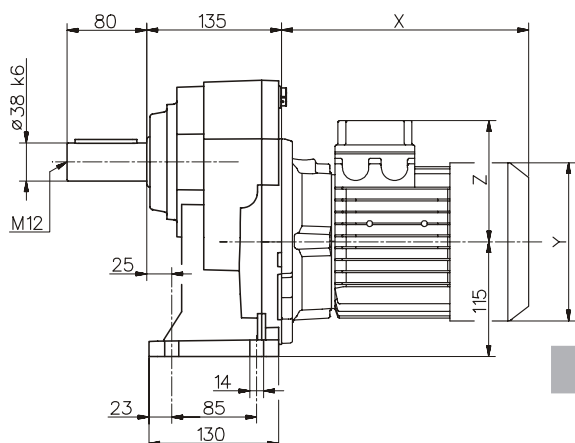
H...U FA-FB-FC

IH...U FA-FB-FC

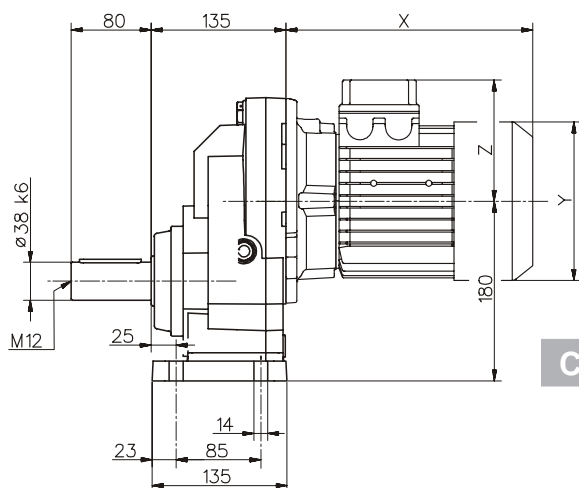


081

Dimensioni / Dimensions / Abmessungen / Encombremets / Dimensiones



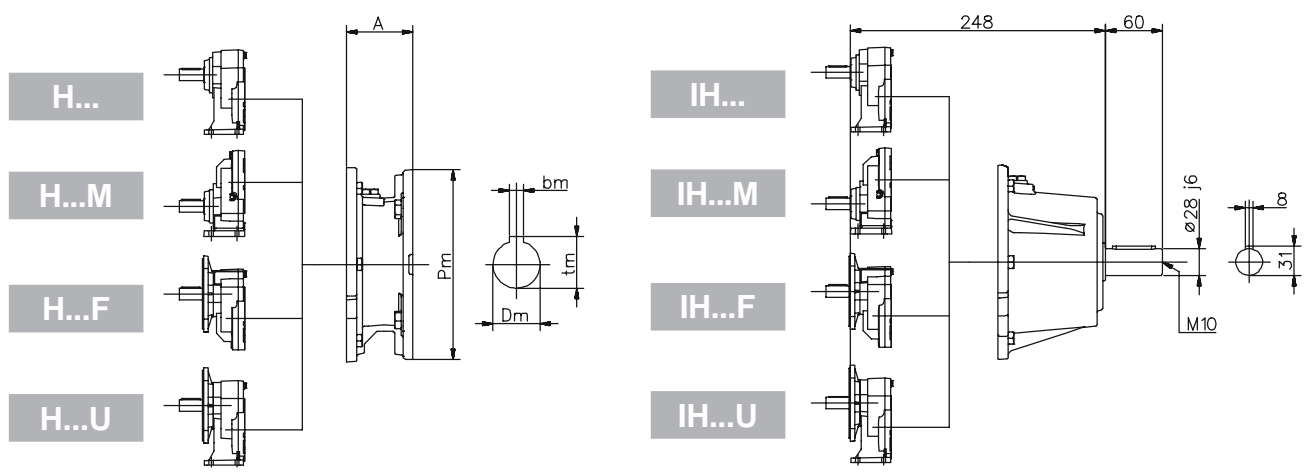
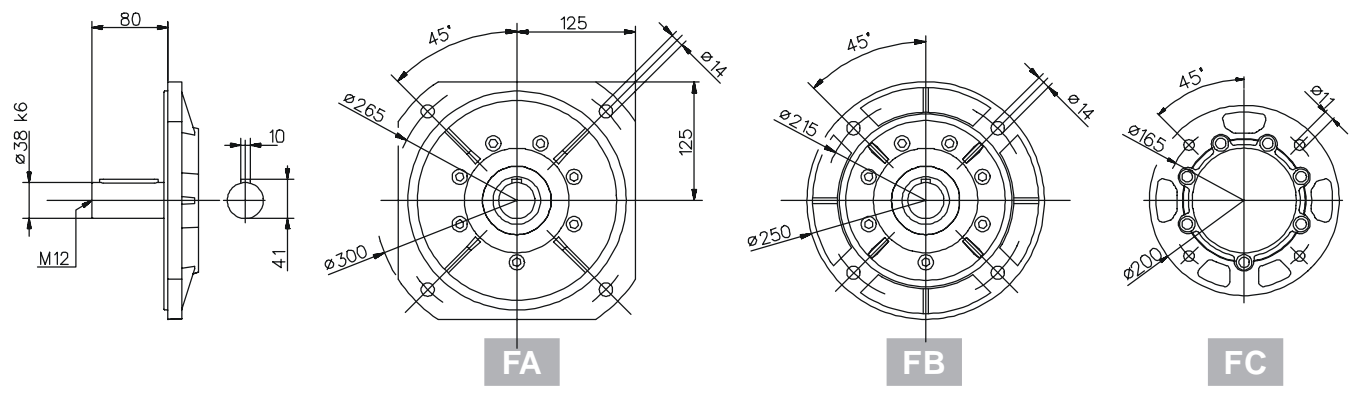
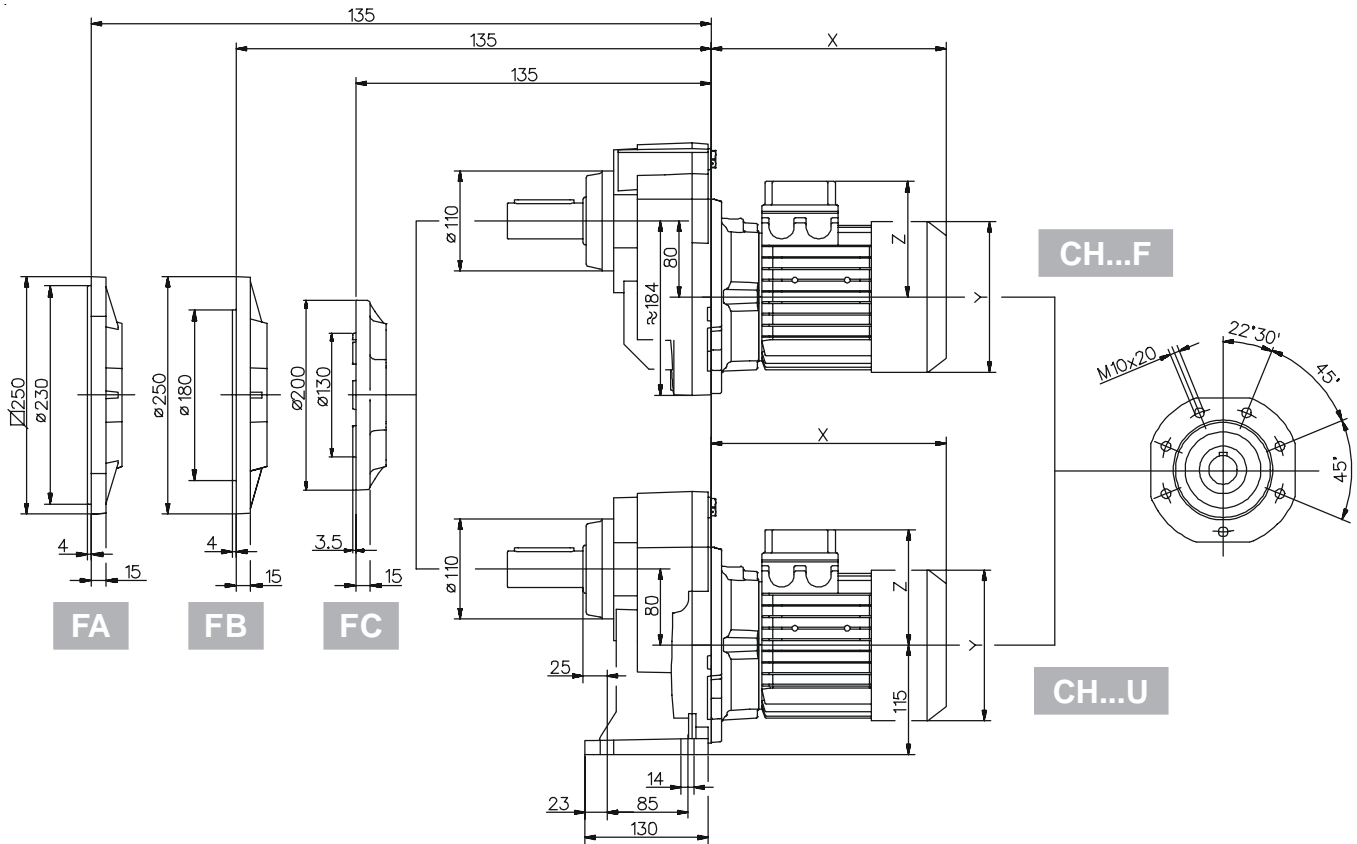
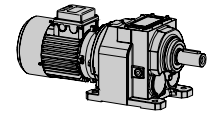
CH

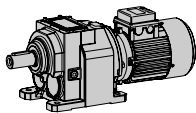


CH...M

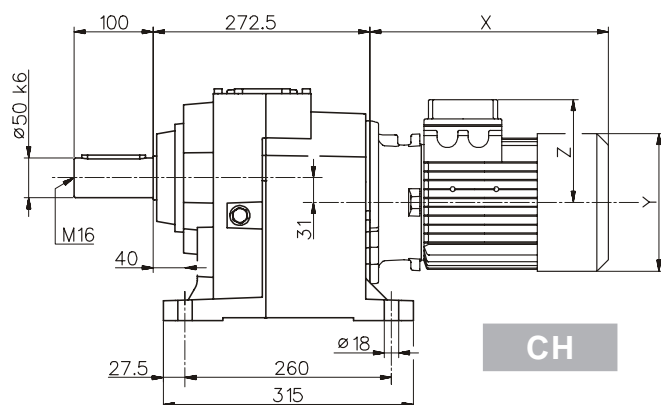
081	IH	PAM		Motore normale / Standard motor / Normaler Motor / Moteur normal / Motor normal				Motore autofrenante / Brake motor / Bremsmotor Moteur frein / Motor-freno			
	~Kg	A	~Kg	X	Y	Z	~Kg	X	Y	Z	~Kg
80	24.5	70	20.6	248	158	122	27.1	321	158	137	30.6
90s		70	20.6	276	173	130	29.5	353	173	130	35
90l		70	20.6	301	173	130	31	378	173	130	36.5
100		85	22.6	335	191	139	36.1	417	191	139	41.6
112		85	22.6	356	211	154	47.5	453	211	154	57.2
132s		110	25.2	396	249	194	61.5	495	249	194	71.8
132m		110	25.2	443	249	194	73.1	547	249	194	87.8

Per le dimensioni relative alla zona attacco motore (Pm, Dm, bm, tm) fare riferimento alla tabella di pag. 134.
 For the dimensions concerning the motor connection area (Pm, Dm, bm, tm) please refer to the table shown at page 134.
 Zu den Abmessungen des Motoranschlußflansches (Pm, Dm, bm, tm) siehe Tabelle auf Seite 134.
 Pour les dimensions concernant la zone de montage du moteur (Pm, Dm, bm, tm) lire SVP le tableau à la page 134.
 Para las magnitudes correspondientes a la zona del motor (Pm, Dm, bm, tm) consulte la tabla de la página 134.

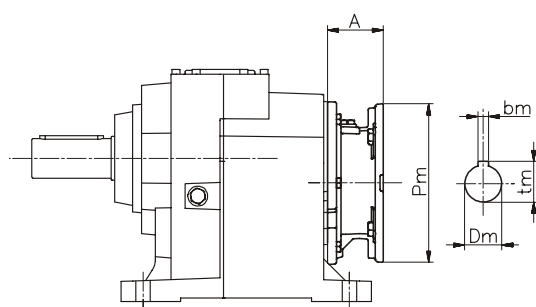




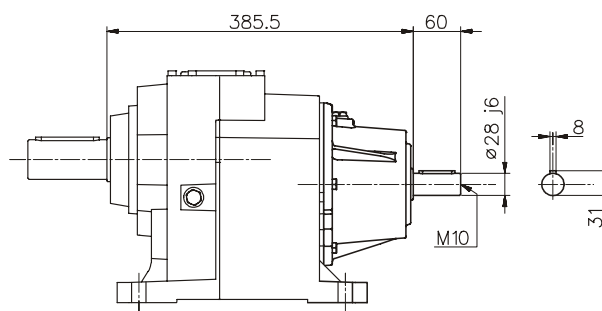
082/..3 Dimensioni / Dimensions / Abmessungen / Encombremets / Dimensiones



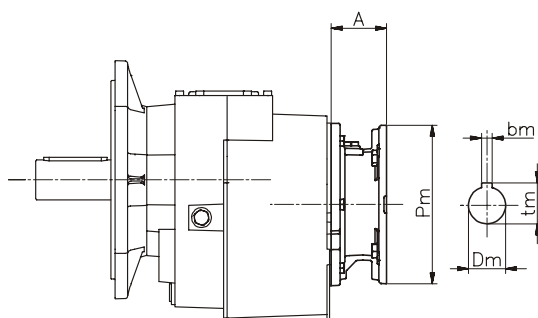
CH



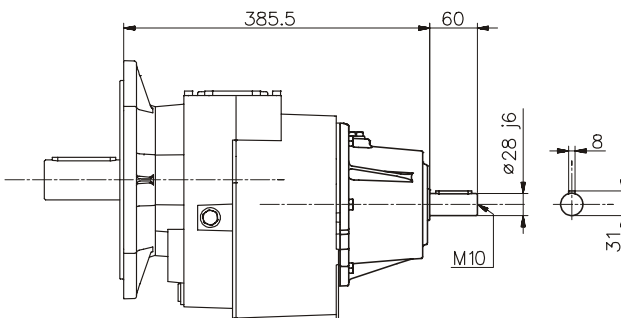
H



IH



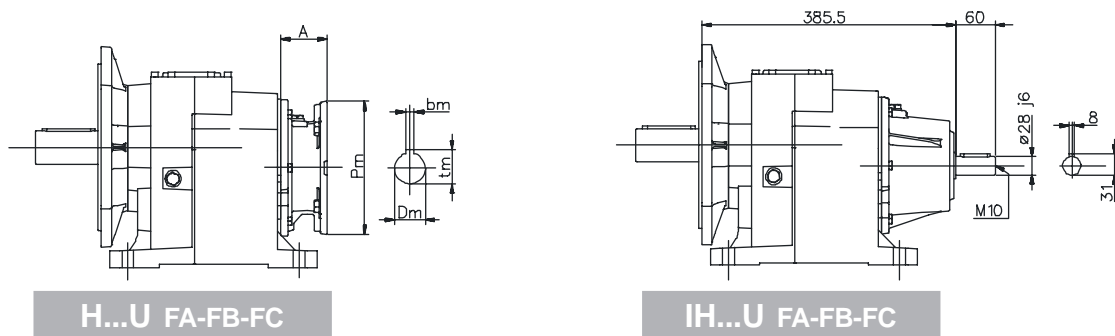
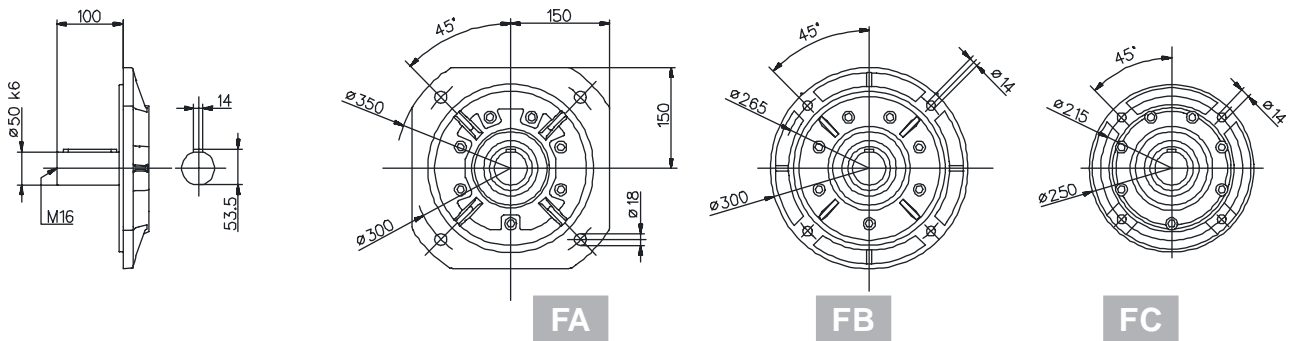
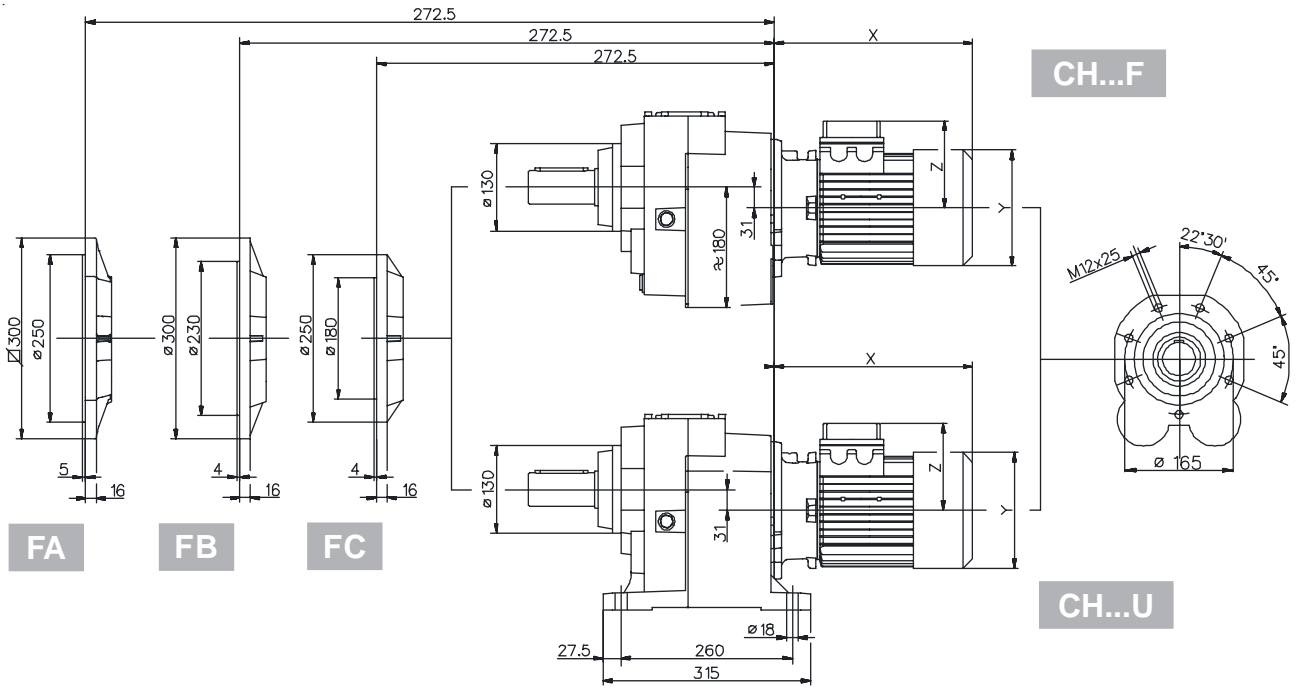
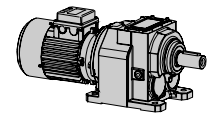
H...F FA-FB-FC

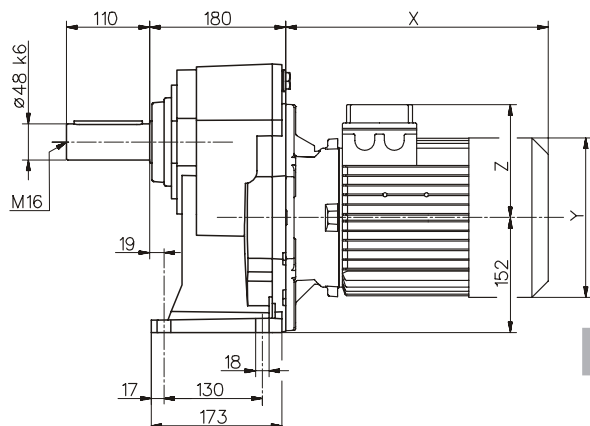
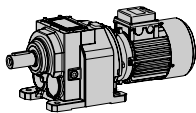


IH...F FA-FB-FC

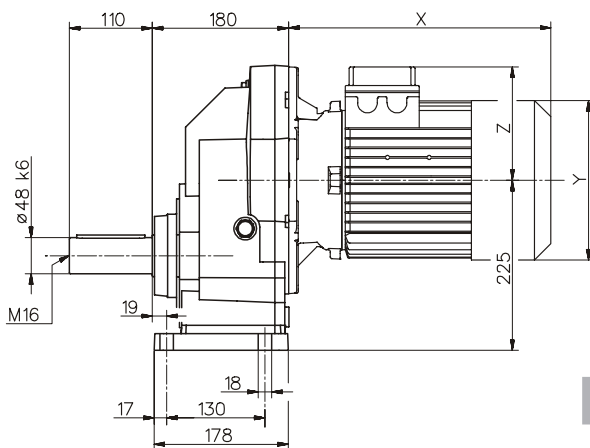
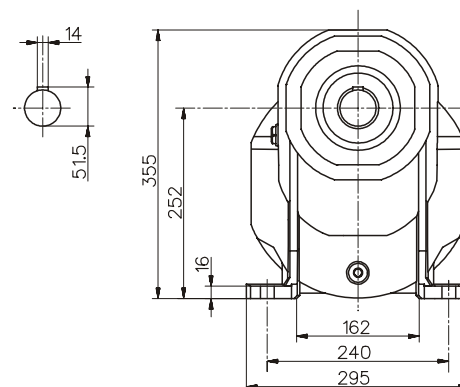
080	IH	PAM		Motore normale / Standard motor / Normaler Motor / Moteur normal / Motor normal			Motore autofrenante / Brake motor / Bremsmotor / Moteur frein / Motor-freno				
	~Kg	A	~Kg	X	Y	Z	~Kg	X	Y	Z	~Kg
80		70	53,1	248	158	122	59,7	321	158	137	63,2
90s		70	53,1	276	173	130	62,1	353	173	130	67,6
90l		70	53,1	301	173	130	63,6	378	173	130	69,1
100		85	55,2	335	191	139	68,7	417	191	139	74,2
112	57,1	85	55,2	356	211	154	80,1	453	211	154	89,8
132s		110	57,2	396	249	194	94,1	495	249	194	104,4
132m		110	57,2	443	249	194	105,7	547	249	194	120,4
160s		158	64,5	522	310	244	-	-	-	-	-
160l		158	64,5	566	310	244	-	-	-	-	-

Per le dimensioni relative alla zona attacco motore (Pm, Dm, bm, tm) fare riferimento alla tabella di pag. 134.
 For the dimensions concerning the motor connection area (Pm, Dm, bm, tm) please refer to the table shown at page 134.
 Zu den Abmessungen des Motoranschlußflansches (Pm, Dm, bm, tm) siehe Tabelle auf Seite 134.
 Pour les dimensions concernant la zone de montage du moteur (Pm, Dm, bm, tm) lire SVP le tableau à la page 134.
 Para las magnitudes correspondientes a la zona del motor (Pm, Dm, bm, tm) consulte la tabla de la página 134.

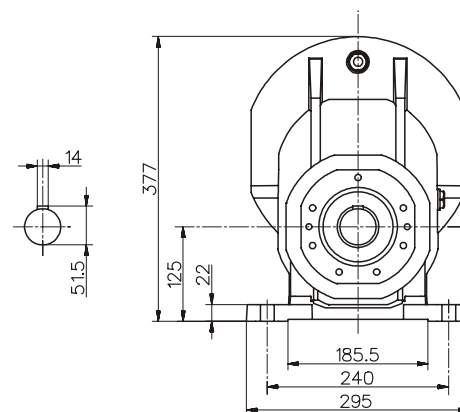




CH

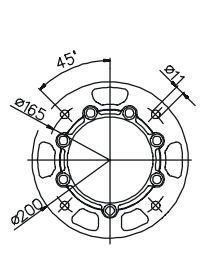
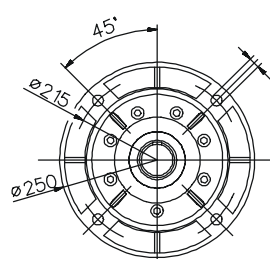
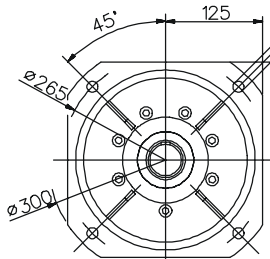
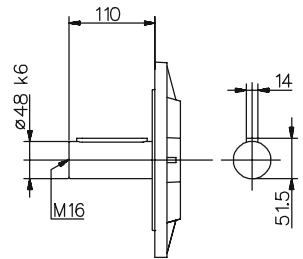
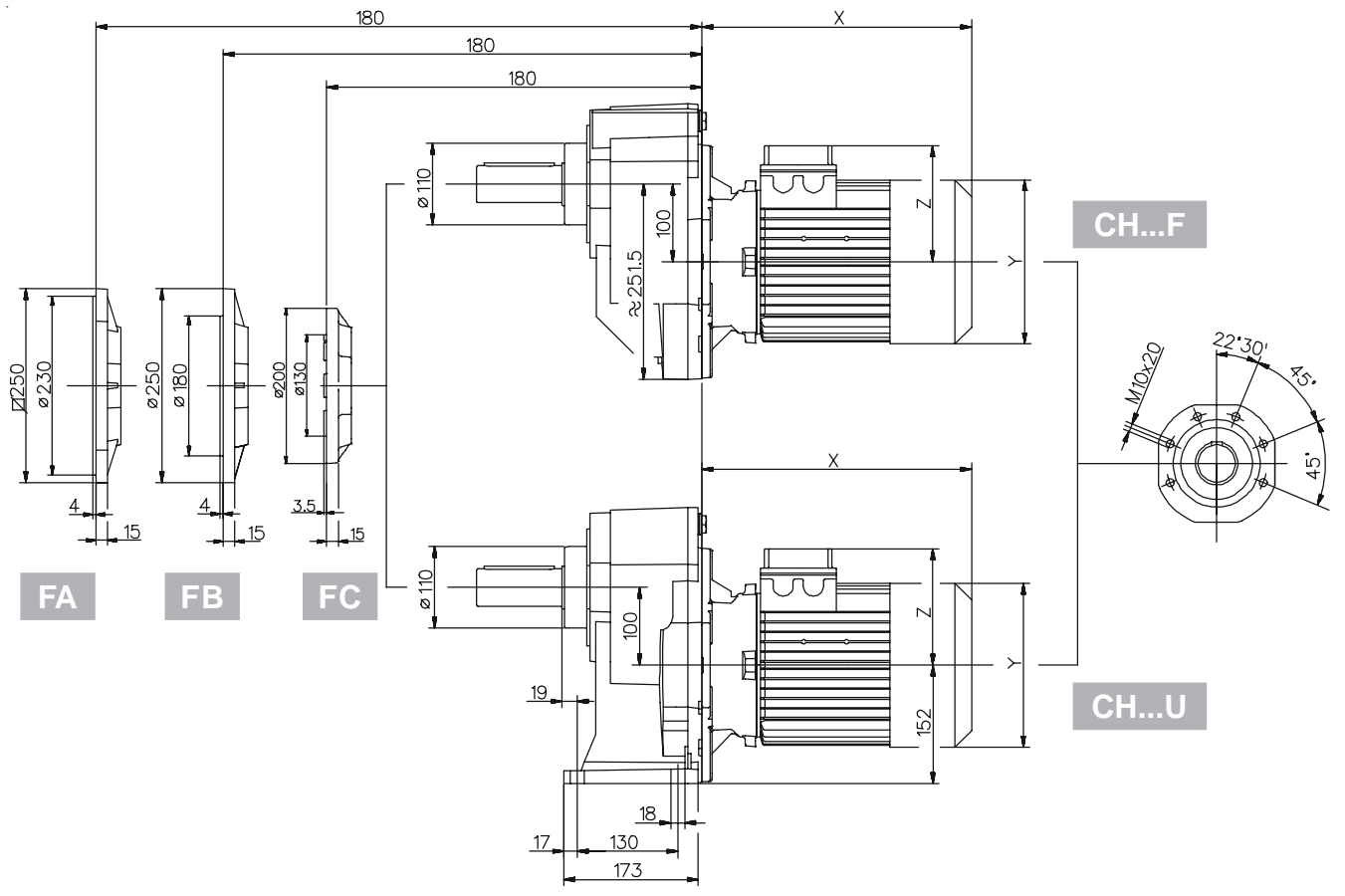
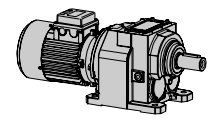


CH...M



101	IH	PAM		Motore normale / Standard motor / Normaler Motor / Moteur normal / Motor normal			Motore autofrenante / Brake motor / Bremsmotor Moteur frein / Motor-freno				
	~Kg	A	~Kg	X	Y	Z	~Kg	X	Y	Z	~Kg
100		76	35,8	326	191	139	49,6	407	191	139	55
112		76	35,8	347	211	154	59,6	443	211	154	69,3
132s		101	38,6	386	249	194	74,6	485	249	194	85
132m	43,4	101	38,6	434	249	194	83,6	537	249	194	98,3
160s		148	44,6	540	310	244	-	-	-	-	-
160l		148	44,6	584	310	244	-	-	-	-	-
180		148	44,6	641	349	260	-	-	-	-	-

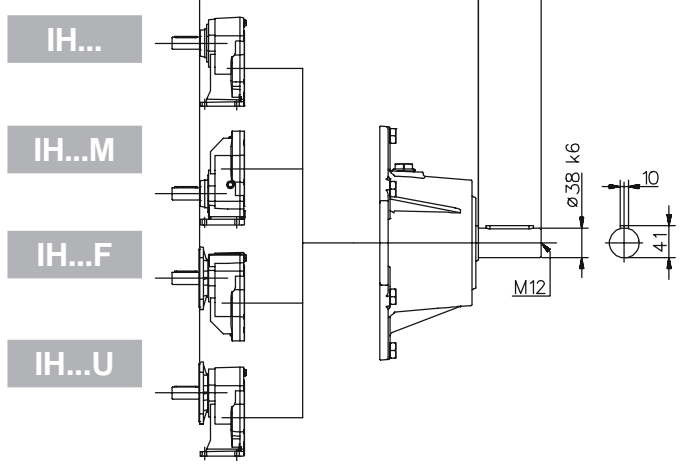
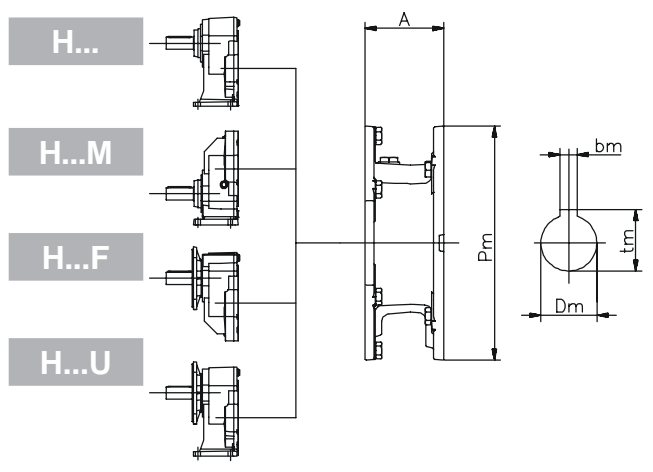
Per le dimensioni relative alla zona attacco motore (Pm, Dm, bm, tm) fare riferimento alla tabella di pag. 134.
 For the dimensions concerning the motor connection area (Pm, Dm, bm, tm) please refer to the table shown at page 134.
 Zu den Abmessungen des Motoranschlußflansches (Pm, Dm, bm, tm) siehe Tabelle auf Seite 134.
 Pour les dimensions concernant la zone de montage du moteur (Pm, Dm, bm, tm) lire SVP le tableau à la page 134.
 Para las magnitudes correspondientes a la zona del motor (Pm, Dm, bm, tm) consulte la tabla de la página 134.



FA

FB

FC



H...

IH...

H...M

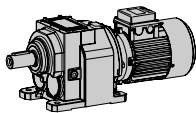
IH...M

H...F

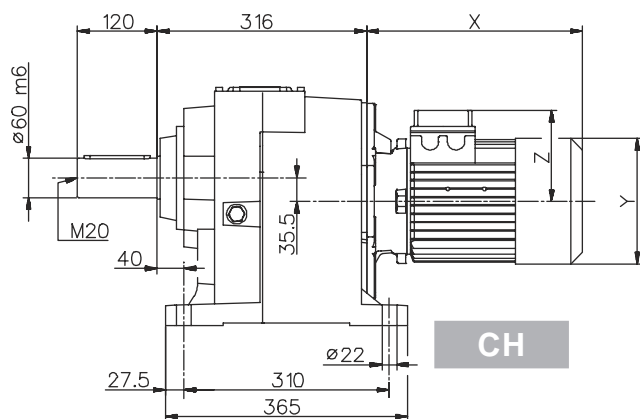
IH...F

H...U

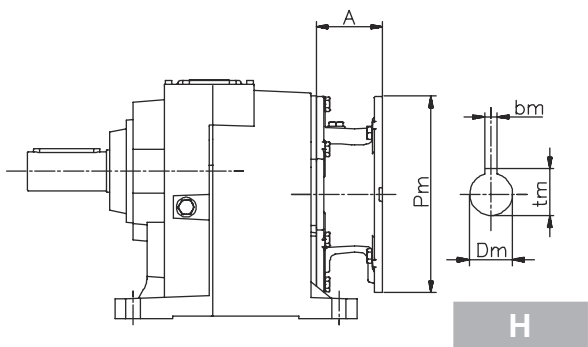
IH...U



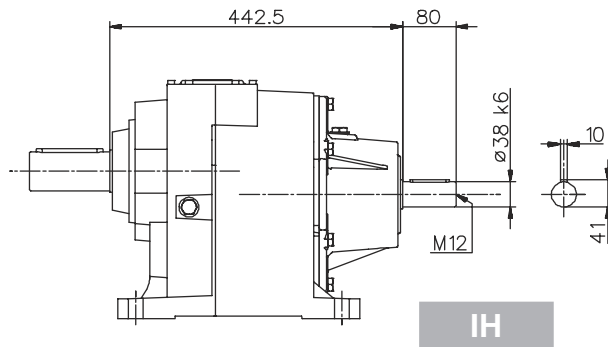
102/..3 **Dimensioni / Dimensions / Abmessungen / Encombremets / Dimensiones**



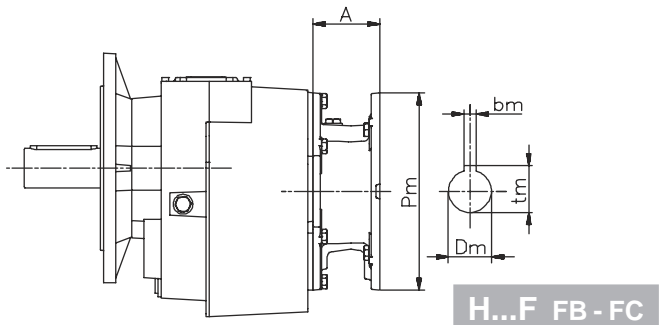
CH



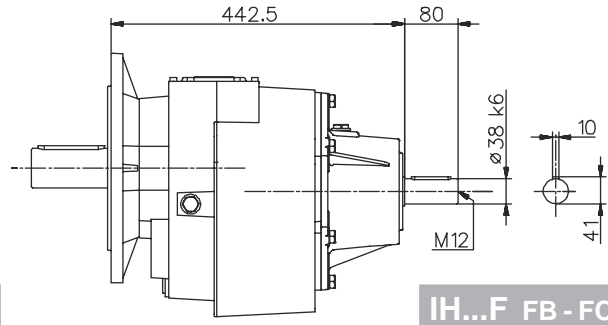
H



IH



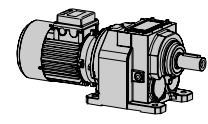
H...F FB-FC



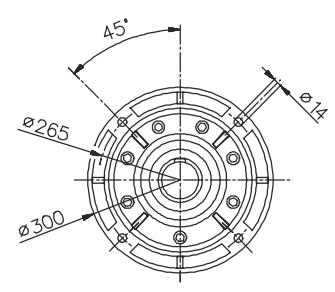
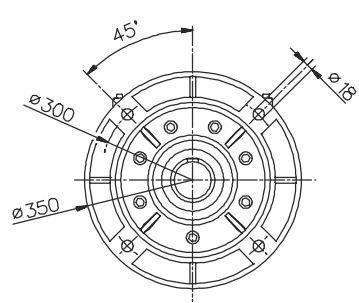
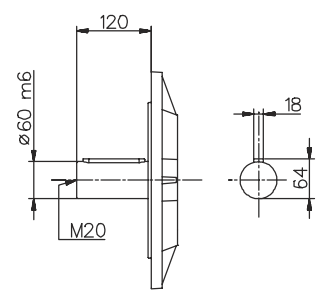
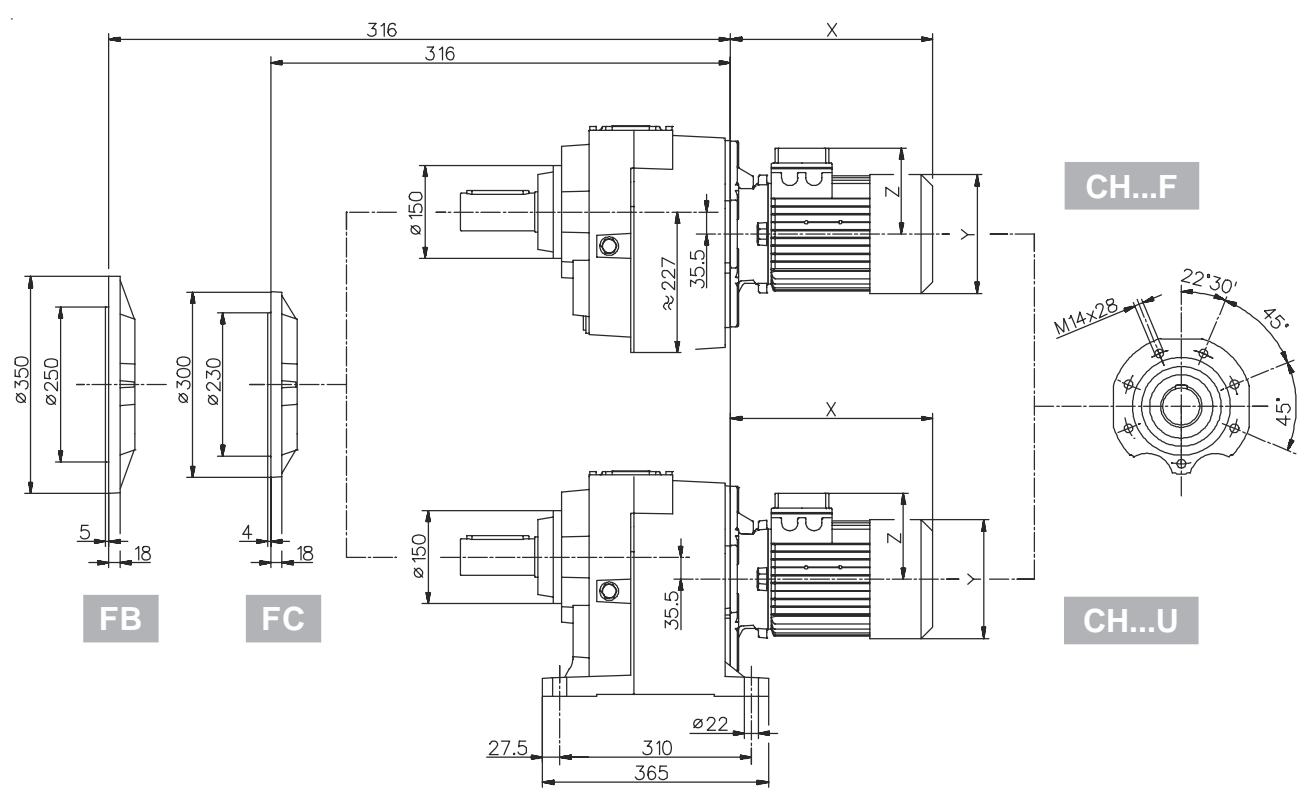
IH...F FB-FC

100	IH	PAM		Motore normale / Standard motor / Normaler Motor / Moteur normal / Motor normal			Motore autofrenante / Brake motor / Bremsmotor Moteur frein / Motor-freno				
	~Kg	A	~Kg	X	Y	Z	~Kg	X	Y	Z	~Kg
90s	94,7	61	84,8	267	173	130	93,8	343	173	130	99,4
90l		61	84,8	292	173	130	94,8	368	173	130	100,4
100		76	87,1	326	191	139	100,8	407	191	139	106,4
112		76	87,1	347	211	154	110,8	443	211	154	120,6
132s		101	89,9	386	249	194	125,8	485	249	194	136,2
132m		101	89,9	434	249	194	134,8	537	249	194	149,6
160s		148	95,9	540	310	244	-	-	-	-	-
160l		148	95,9	584	310	244	-	-	-	-	-
180		148	95,9	641	349	260	-	-	-	-	-

Per le dimensioni relative alla zona attacco motore (Pm, Dm, bm, tm) fare riferimento alla tabella di pag. 134.
 For the dimensions concerning the motor connection area (Pm, Dm, bm, tm) please refer to the table shown at page 134.
 Zu den Abmessungen des Motoranschlußflansches (Pm, Dm, bm, tm) siehe Tabelle auf Seite 134.
 Pour les dimensions concernant la zone de montage du moteur (Pm, Dm, bm, tm) lire SVP le tableau à la page 134.
 Para las magnitudes correspondientes a la zona del motor (Pm, Dm, bm, tm) consulte la tabla de la página 134.

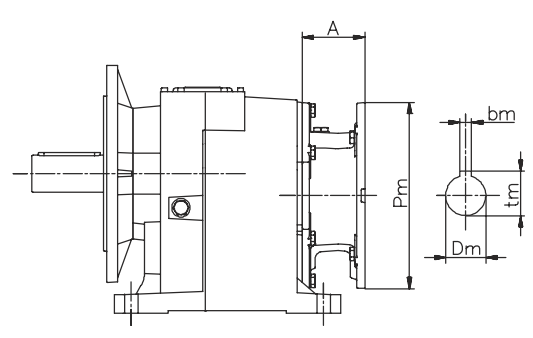


Dimensioni / Dimensions / Abmessungen / Encombremts / Dimensiones 102/..3

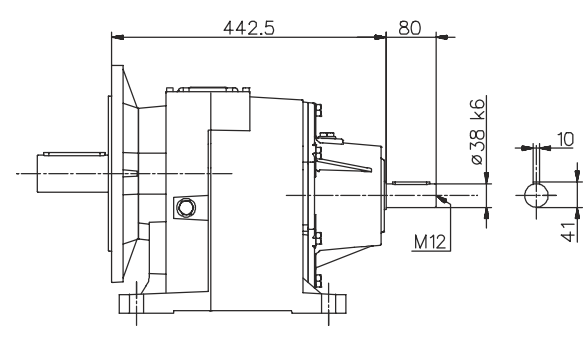


FB

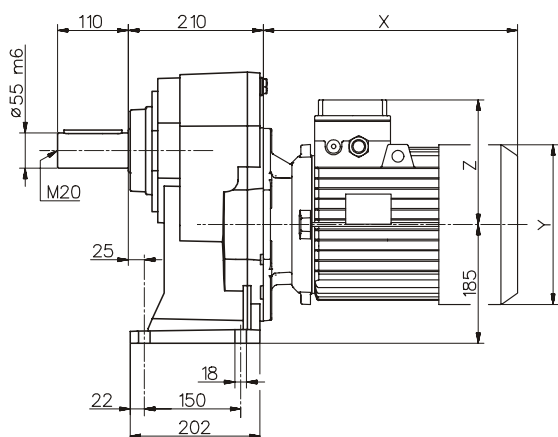
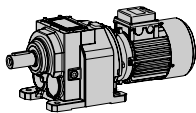
FC



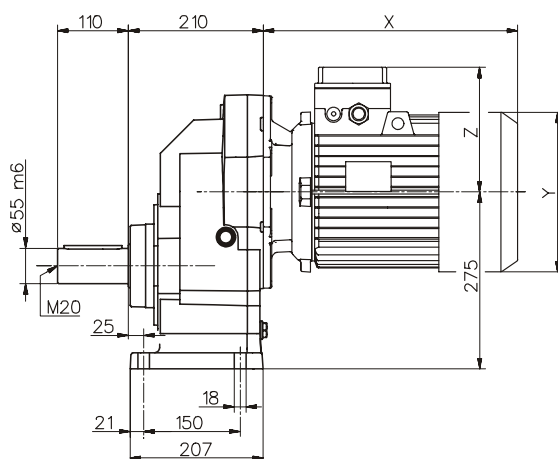
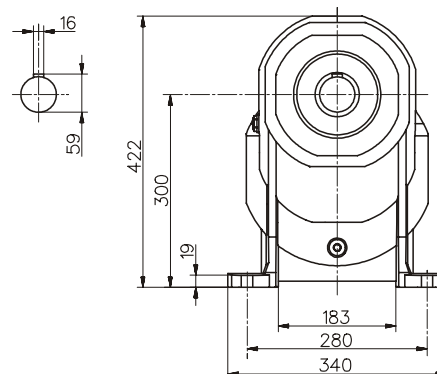
H...U FB-FC



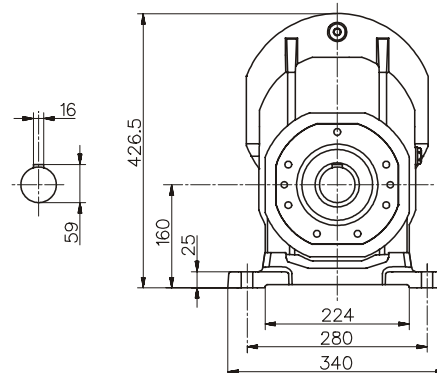
IH...U FB-FC



CH

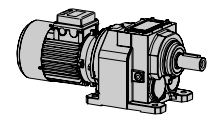


CH...M

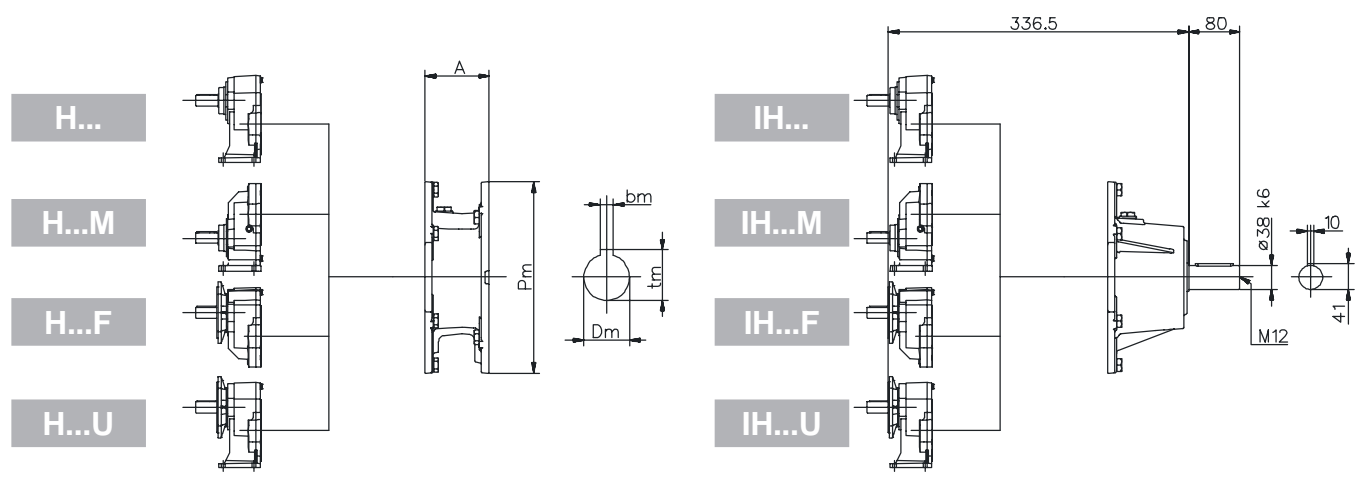
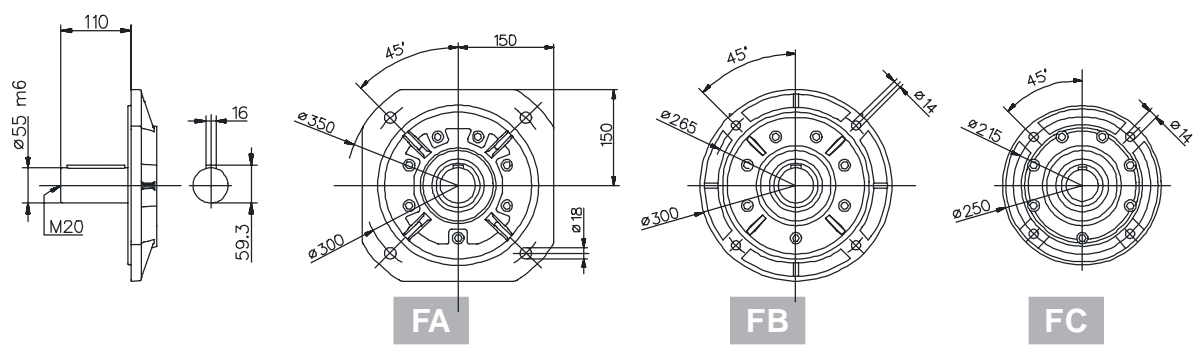
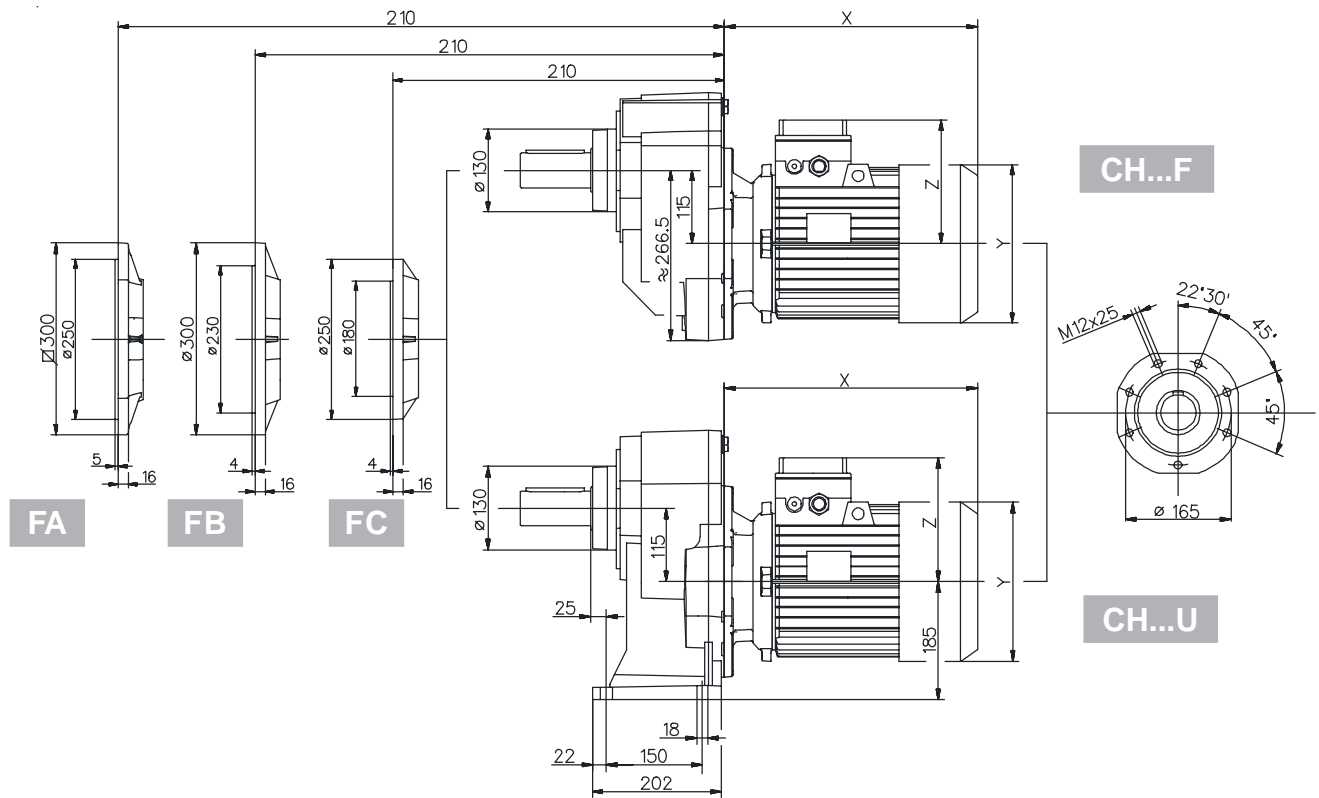


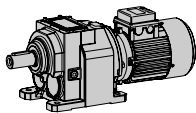
121	IH	PAM		Motore normale / Standard motor / Normaler Motor / Moteur normal / Motor normal				Motore autofrenante / Brake motor / Bremsmotor Moteur frein / Motor-freno			
	~Kg	A	~Kg	X	Y	Z	~Kg	X	Y	Z	~Kg
132s	45,8	101	41	386	249	194	77	485	249	194	87,3
132m		101	41	434	249	194	86	537	249	194	100,7
160s		148	47	540	310	244	-	-	-	-	-
160l		148	47	584	310	244	-	-	-	-	-
180		148	47	641	349	260	-	-	-	-	-
200		185	62	-	-	-	-	-	-	-	-

Per le dimensioni relative alla zona attacco motore (Pm, Dm, bm, tm) fare riferimento alla tabella di pag. 134.
 For the dimensions concerning the motor connection area (Pm, Dm, bm, tm) please refer to the table shown at page 134.
 Zu den Abmessungen des Motoranschlußflansches (Pm, Dm, bm, tm) siehe Tabelle auf Seite 134.
 Pour les dimensions concernant la zone de montage du moteur (Pm, Dm, bm, tm) lire SVP le tableau à la page 134.
 Para las magnitudes correspondientes a la zona del motor (Pm, Dm, bm, tm) consulte la tabla de la página 134.

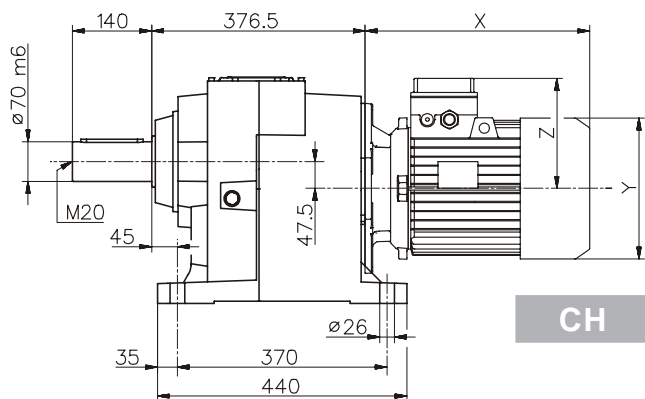


Dimensioni / Dimensions / Abmessungen / Encombremets / Dimensiones 121

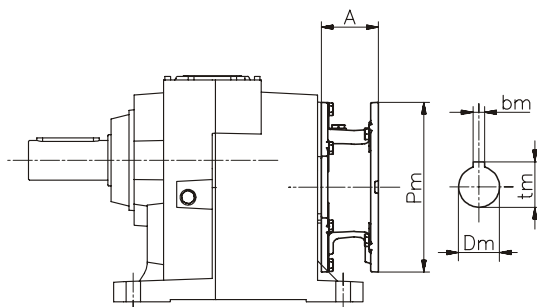
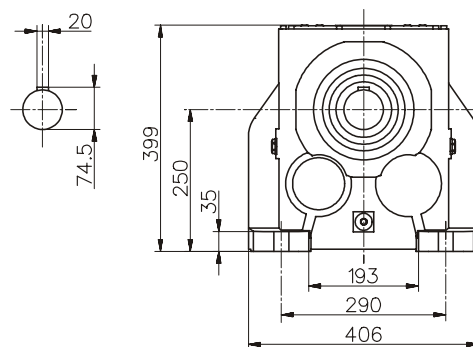




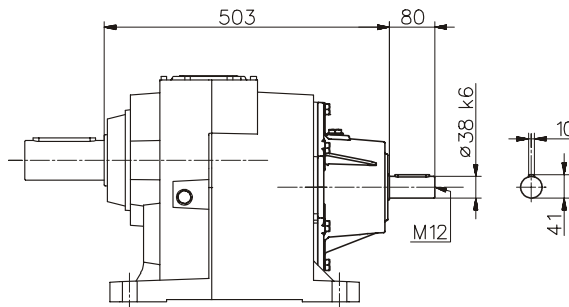
122/..3 Dimensioni / Dimensions / Abmessungen / Encombremets / Dimensiones



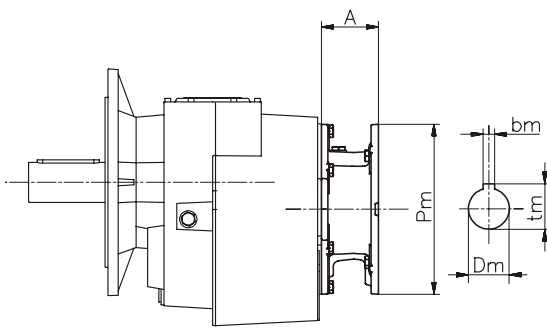
CH



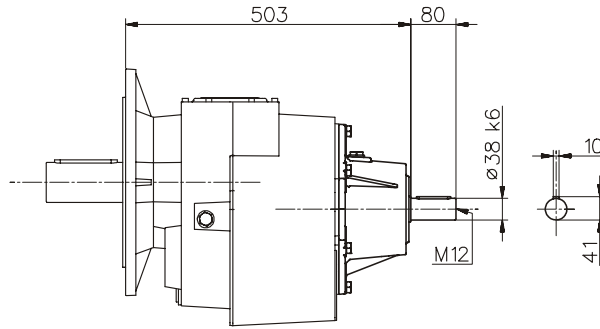
H



IH



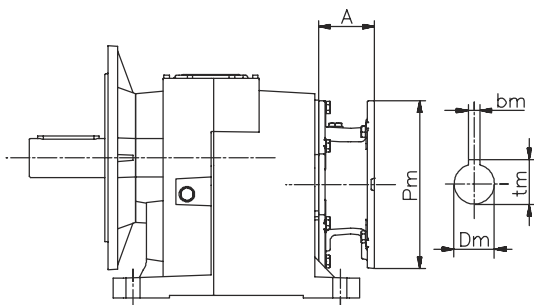
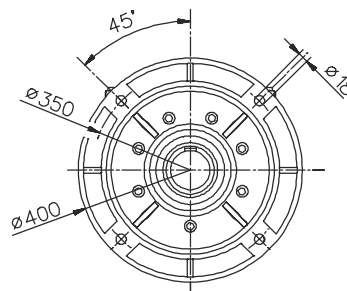
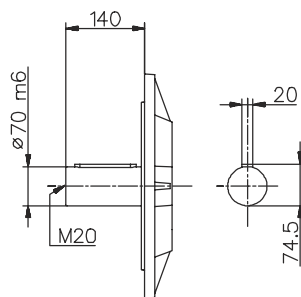
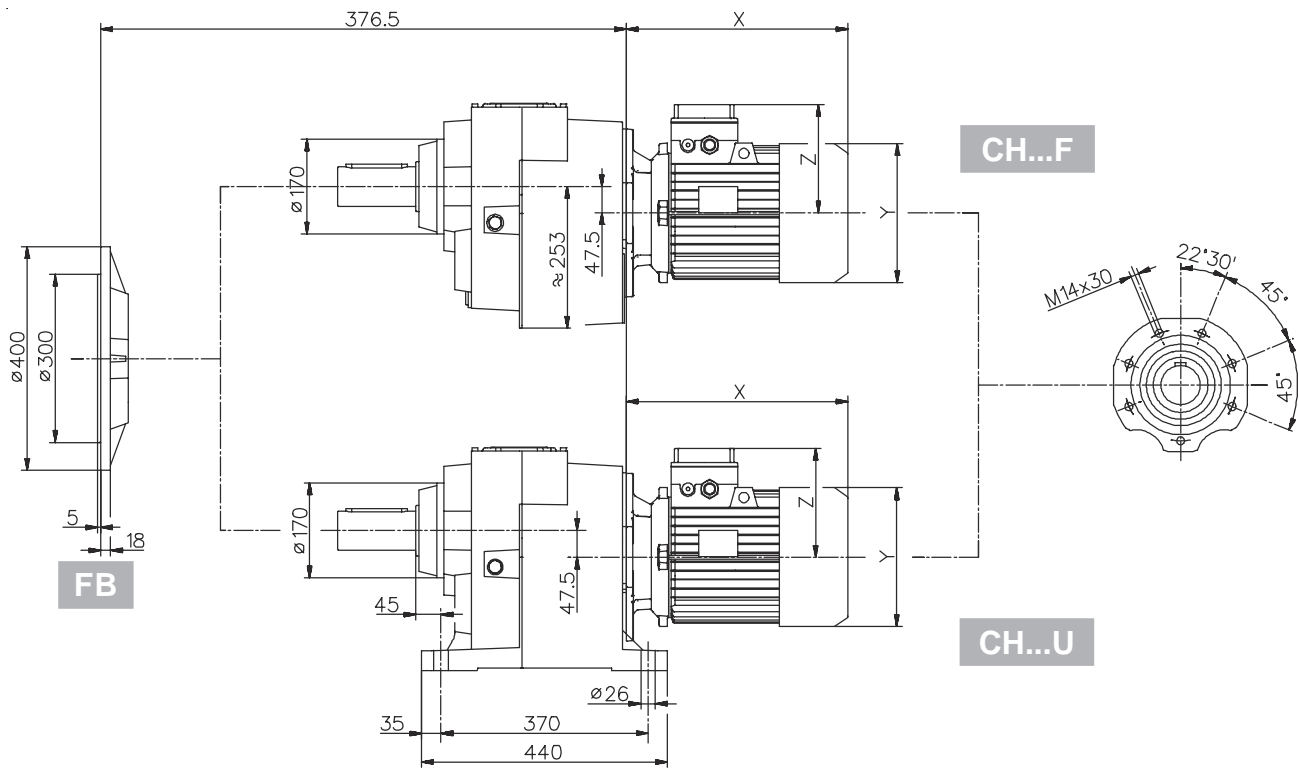
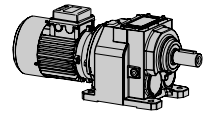
H...F FB



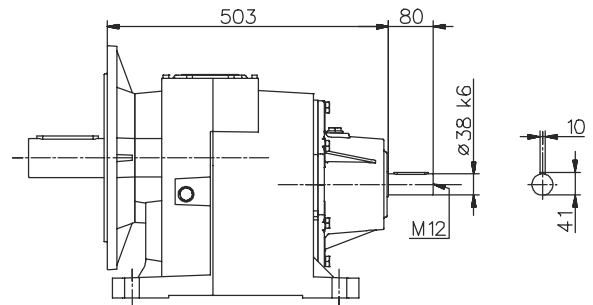
IH...F FB

125	IH ~Kg	PAM		Motore normale / Standard motor / Normaler Motor / Moteur normal / Motor normal			Motore autofrenante / Brake motor / Bremsmotor Moteur frein / Motor-freno				
		A	~Kg	X	Y	Z	~Kg	X	Y	Z	~Kg
100	128,3	76	120,7	326	191	151	134,5	407	191	139	140
112		76	120,7	347	211	166	144,5	443	211	154	154,2
132s		101	123,5	386	249	206	159,5	485	249	194	169,8
132m		101	123,5	434	249	206	168,5	537	249	194	183,2
160s		148	129,5	540	310	256	-	-	-	-	-
160l		148	129,5	584	310	256	-	-	-	-	-
180		148	129,5	641	349	272	-	-	-	-	-
200		185	144,5	-	-	-	-	-	-	-	-

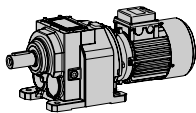
Per le dimensioni relative alla zona attacco motore (Pm, Dm, bm, tm) fare riferimento alla tabella di pag. 134.
 For the dimensions concerning the motor connection area (Pm, Dm, bm, tm) please refer to the table shown at page 134.
 Zu den Abmessungen des Motoranschlußflansches (Pm, Dm, bm, tm) siehe Tabelle auf Seite 134.
 Pour les dimensions concernant la zone de montage du moteur (Pm, Dm, bm, tm) lire SVP le tableau à la page 134.
 Para las magnitudes correspondientes a la zona del motor (Pm, Dm, bm, tm) consulte la tabla de la página 134.



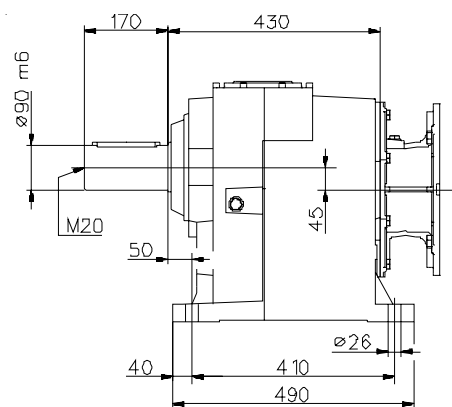
H...U FB



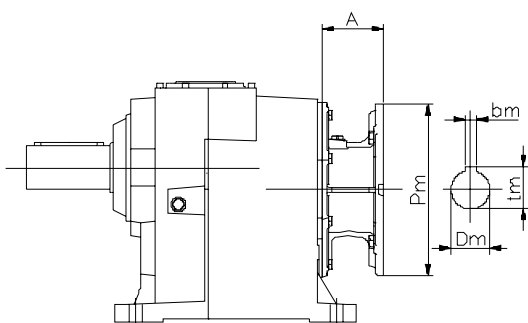
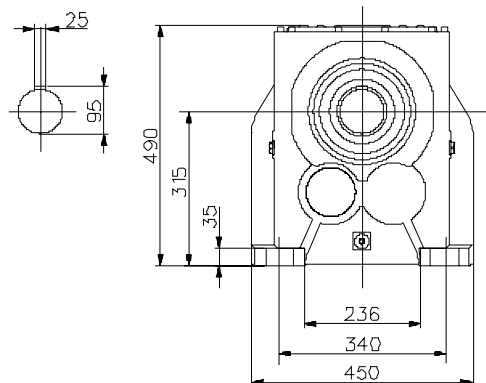
IH...U FB



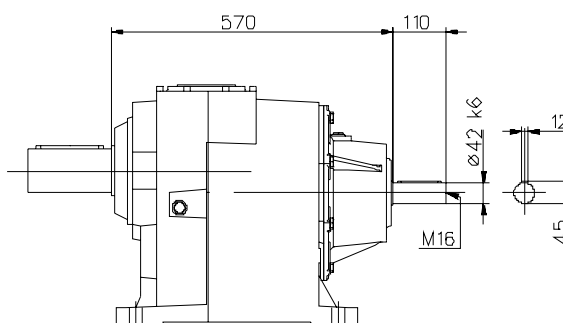
142/..3 **Dimensioni / Dimensions / Abmessungen / Encombremets / Dimensiones**



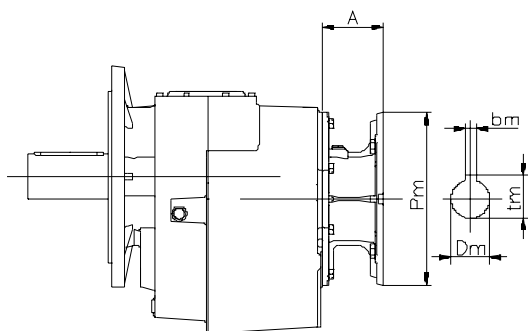
H



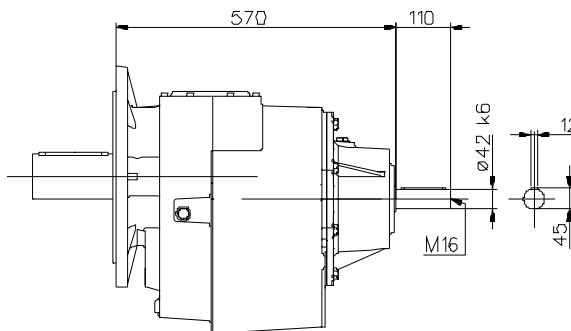
H



IH



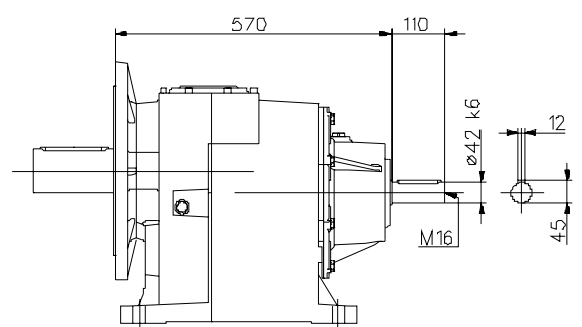
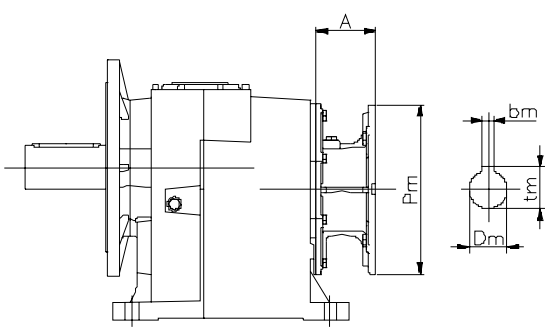
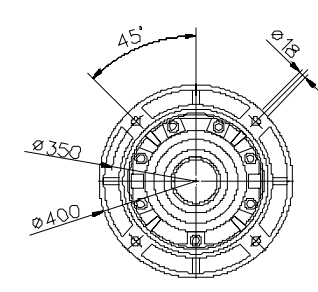
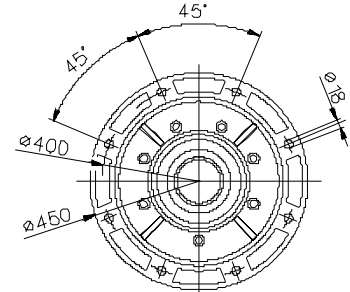
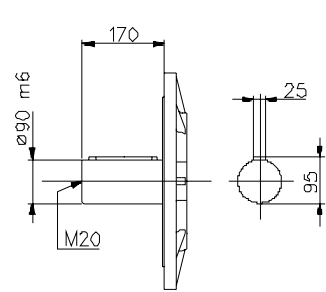
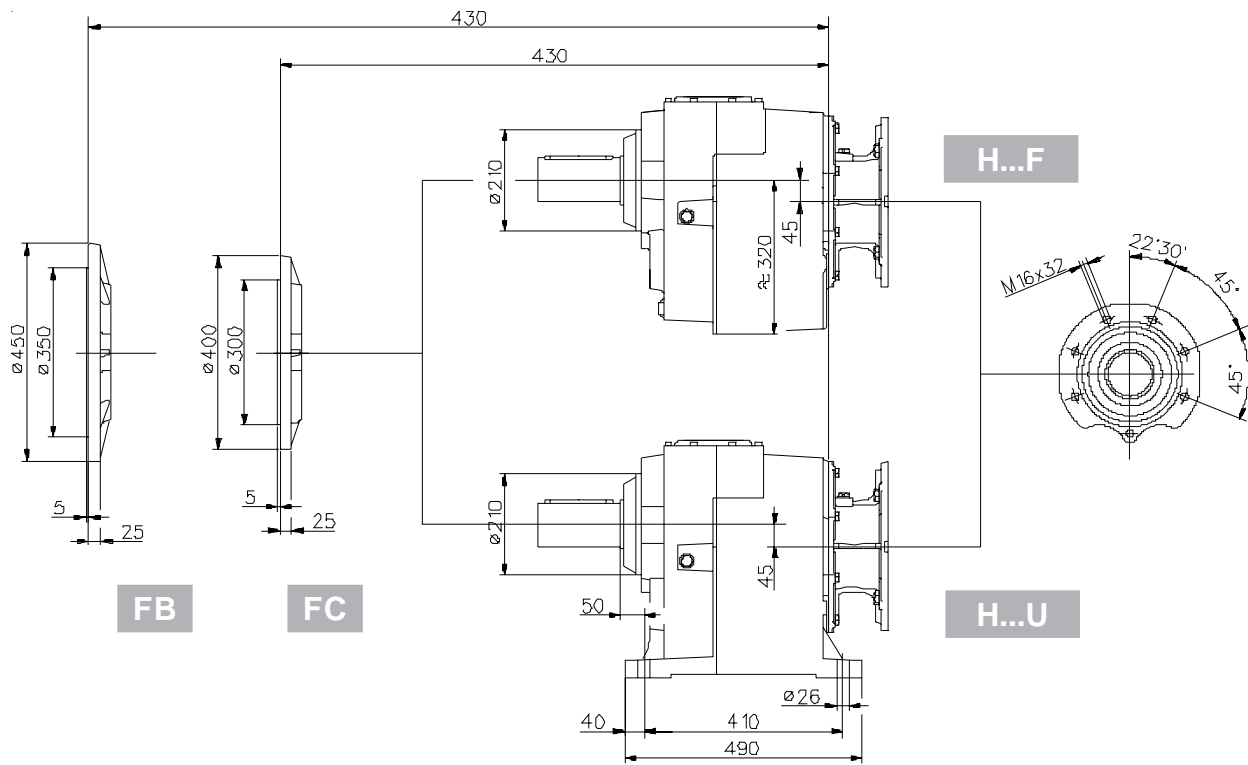
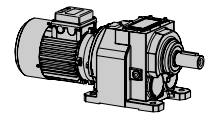
H...F FB-FC



IH...F FB-FC

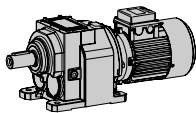
140	IH	PAM		Motore normale / Standard motor / Normaler Motor / Moteur normal / Motor normal			Motore autofrenante / Brake motor / Bremsmotor / Moteur frein / Motor-freno					
		~Kg	A	~Kg	X	Y	Z	~Kg	X	Y	Z	~Kg
132s	212,2	76	197,1	-	-	-	-	-	-	-	-	-
132m		76	197,1	-	-	-	-	-	-	-	-	-
160s		124	205	-	-	-	-	-	-	-	-	-
160l		124	205	-	-	-	-	-	-	-	-	-
180		124	205	-	-	-	-	-	-	-	-	-
200		161	219,2	-	-	-	-	-	-	-	-	-
225		161	221	-	-	-	-	-	-	-	-	-

Per le dimensioni relative alla zona attacco motore (Pm, Dm, bm, tm) fare riferimento alla tabella di pag. 134.
 For the dimensions concerning the motor connection area (Pm, Dm, bm, tm) please refer to the table shown at page 134.
 Zu den Abmessungen des Motoranschlußflansches (Pm, Dm, bm, tm) siehe Tabelle auf Seite 134.
 Pour les dimensions concernant la zone de montage du moteur (Pm, Dm, bm, tm) lire SVP le tableau à la page 134.
 Para las magnitudes correspondientes a la zona del motor (Pm, Dm, bm, tm) consulte la tabla de la página 134.

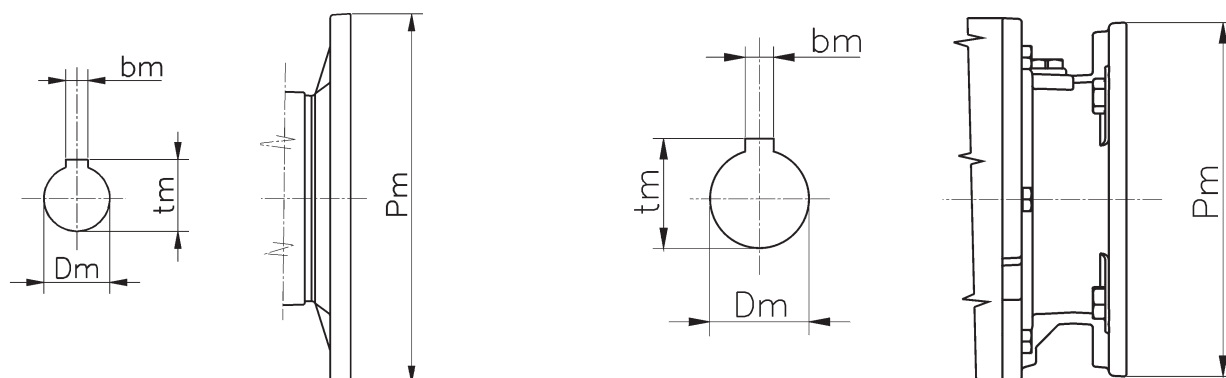


H...U FB-FC

IH...U FB-FC

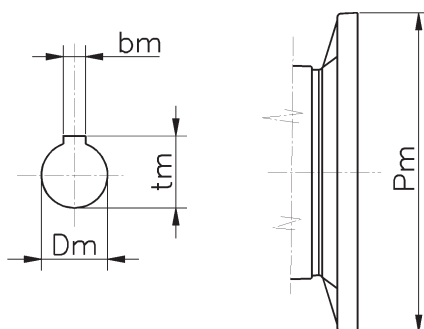


PAM B5 - Dimensioni / Dimensions / Abmessungen / Encombremets / Dimensiones



B5	IEC										
	063	071	080	090	100	112	132	160	180	200	225
Pm	140	160	200	200	250	250	300	350	350	400	450
Dm	11	14	19	24	28	28	38	42	48	55	60
bm	4	5	6	8	8	8	10	12	14	16	18
tm	12,8	16,3	21,8	27,3	31,3	31,3	41,3	45,3	51,8	59,3	64,4

PAM B14 - Dimensioni / Dimensions / Abmessungen / Encombremets / Dimensiones



B14	IEC						
	056	063	071	080	090	100	112
Pm	80	90	105	120	140	160	160
Dm	9	11	14	19	24	28	28
bm	3	4	5	6	8	8	8
tm	10,4	12,8	16,3	21,8	27,3	31,3	31,3