

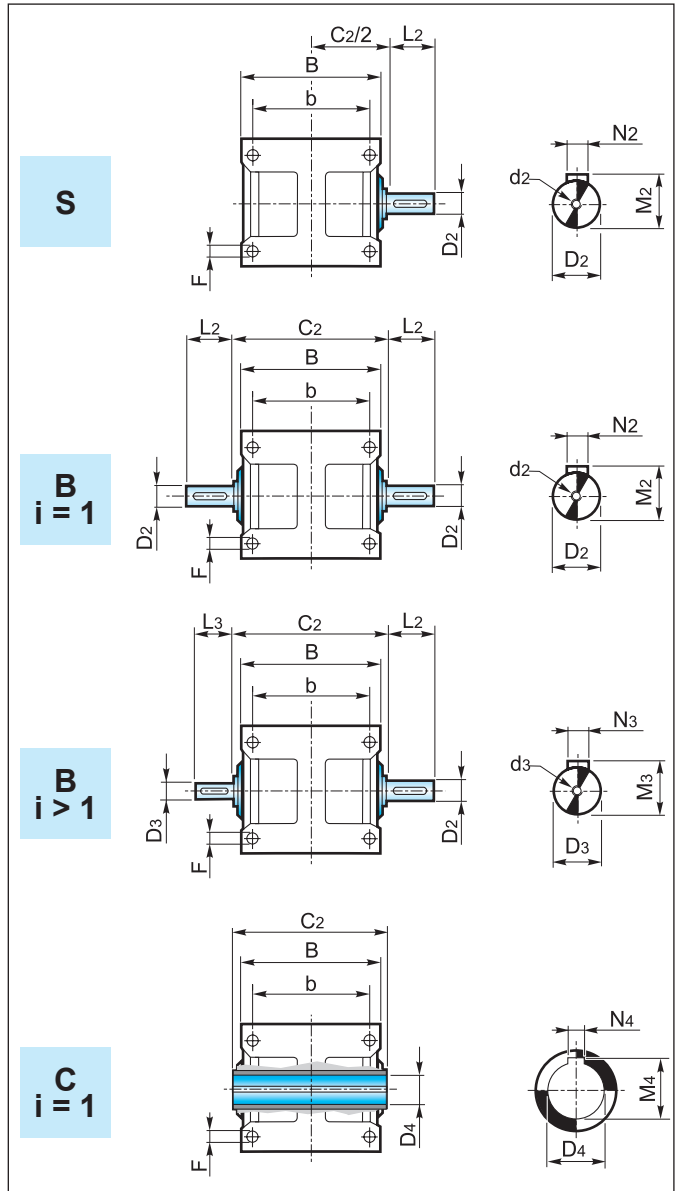
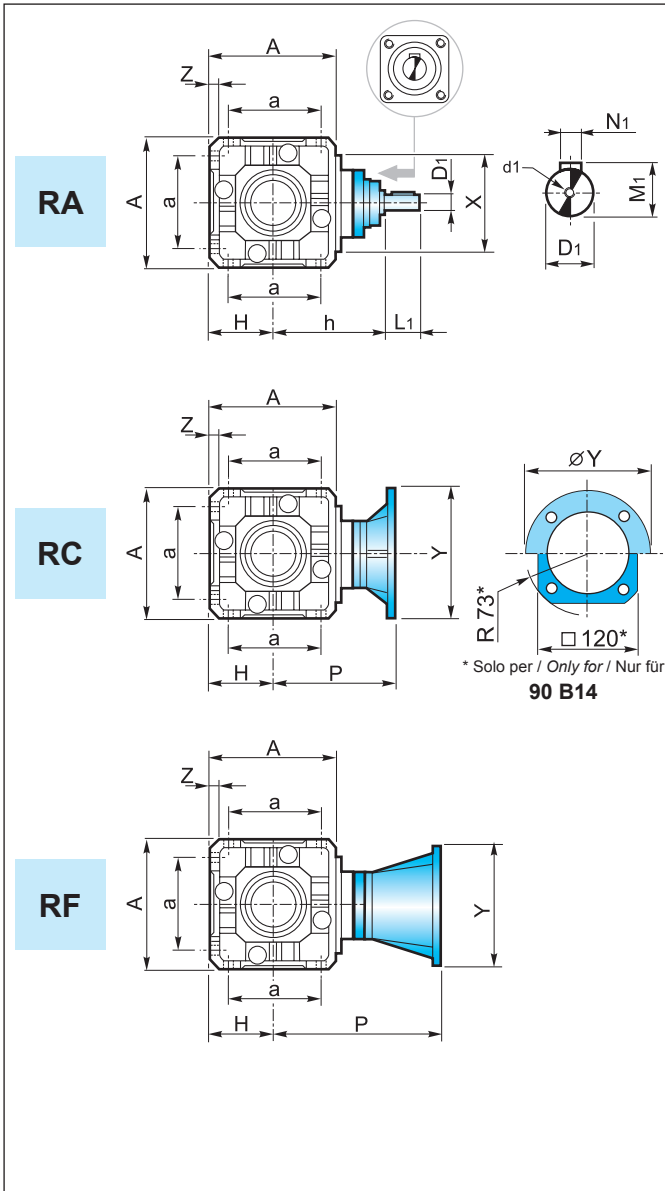
Dimensioni

Dimensions

Abmessungen

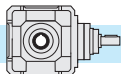
Tipo entrata / Input type / Antriebsart

Tipo uscita / Output type / Ausgang Typ



		RA...- RC...- RF...					
		19	24	28	38	48	
A	i = 1	112	142	180	224	280	
a		80	100	130	160	190	
B		128	146	175	204	230	
b		110	125	145	175	200	
C2		130	150	180	210	240	
D2_{h6}		19	24	28	38	48	
d2		M8	M8	M8	M10	M12	
M2		21.5	27	31	41	51.5	
N2		6	8	8	10	14	
F		7	9	11	13	15	
H		56	71	90	112	140	
L2		40	50	60	80	110	
Z		7	9	10	13	15	
D3_{h6}		i = 1	19	24	28	38	48
d3	M8		M8	M8	M10	M12	
L3	40		50	60	80	110	
M3	21.5		27	31	41	51.5	
N3	6		8	8	10	14	
D4_{H7}	20		25	30	40	50	
M4	22.8		28.3	33.3	43.3	53.8	
N4	6		8	8	12	14	
D3_{h6}	i > 1		14	19	24	28	38
d3			M6	M8	M8	M10	M10
L3			30	40	50	60	80
M3			16	21.5	27	31	41
N3			5	6	8	8	10
N3			5	6	8	8	10

		RA				
		19	24	28	38	48
h	i = 1	101	120	147	170	207.5
D1_{h6}		19	24	28	38	48
d1		M8	M8	M8	M10	M12
M1		21.5	27	31	41	51.5
N1		6	8	8	10	14
h	i > 1	110	130	160	190	237.5
D1_{h6}		14	19	24	28	38
d1		M6	M8	M8	M8	M10
M1		16	21.5	27	31	41
N1		5	6	8	8	10
L1	i = 1	30	40	50	60	80
X		90	110	130	150	175
kg	i > 1	8.5	14	23	38	62
kg		RC...- RF...				
kg		11.5	19	33	55	82

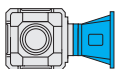


		RC...								
		19				24				
IEC		63 B5	71 B5	80/90 B5	80 B14	71 B5	80 B5	90 B5	90* B14	100/112 B5
Q		—	—	—	—	—	—	—	120	—
Y		140	160	200	120	160	200	200	146	250
P	i = 1	104	111	131	131	128	148	148	148	158
P	i > 1	113	120	140	140	138	158	158	158	168



		RC...											
		28			38				48				
IEC		80/90 B5	100/112 B5	132 B5	80 B5	90 B5	100/112 B5	132 B5	160/180 B5	100/112 B5	132 B5	160/180 B5	200 B5
Y		200	250	300	200	200	250	300	350	250	300	350	400
P	i = 1	171	181	203	184	184	194	216	246	220	240	270	270
P	i > 1	184	194	216	204	204	214	236	266	250 (i=2.5 - 5) 260 (i=10)	270 (i=2.5 - 5) 280 (i=10)	300 (i=2.5 - 5) 310 (i=10)	

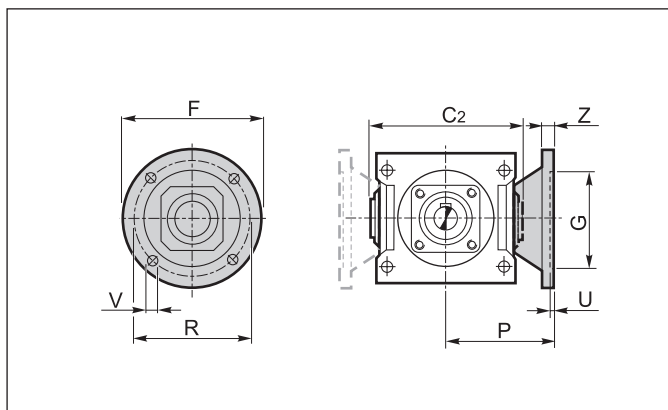
* Flange quadrate / Square flanges / Viereckige Flansche



		RF...																
		19			24			28			38				48			
IEC		63 B5	71 B5	80/90 B5	71 B5	80/90 B5	100/112 B5	80/90 B5	100/112 B5	132 B5	80/90 B5	100/112 B5	132 B5	160/180 B5	100/112 B5	132 B5	160/180 B5	200 B5
Y		140	160	200	160	200	250	200	250	300	200	250	300	350	250	300	350	400
P	i = 1	158	165	186	194	215	225	252	262	283	285	295	316	346	354	373	405	405
P	i > 1	167	174	195	204	225	235	265	275	296	305	315	336	366	384	403	435	435

Accessori

Flangia uscita



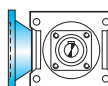
Accessories

Output flange

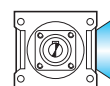
Zubehör

Abtriebsflansch

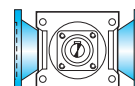
	R				
	19	24	28	38	48
C2	130	150	180	210	240
F	140	160	200	250	250
G_{F7}	95	110	130	180	180
P	86	100	120	145	175
R	115	130	165	215	215
U	3.5	4	4.5	5	5
V	9	11	13	15	15
Z	10	12.5	16	20	20



FLS



FLD



FL2