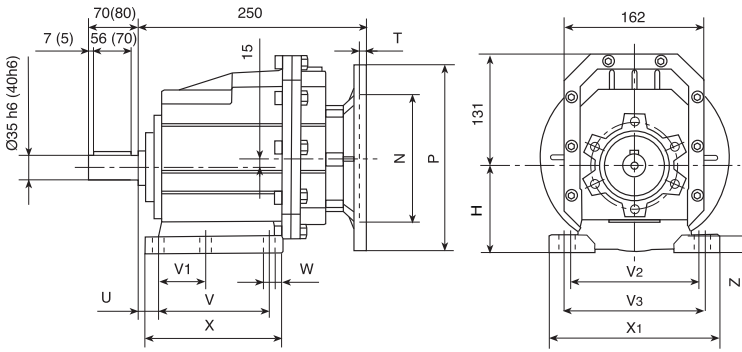
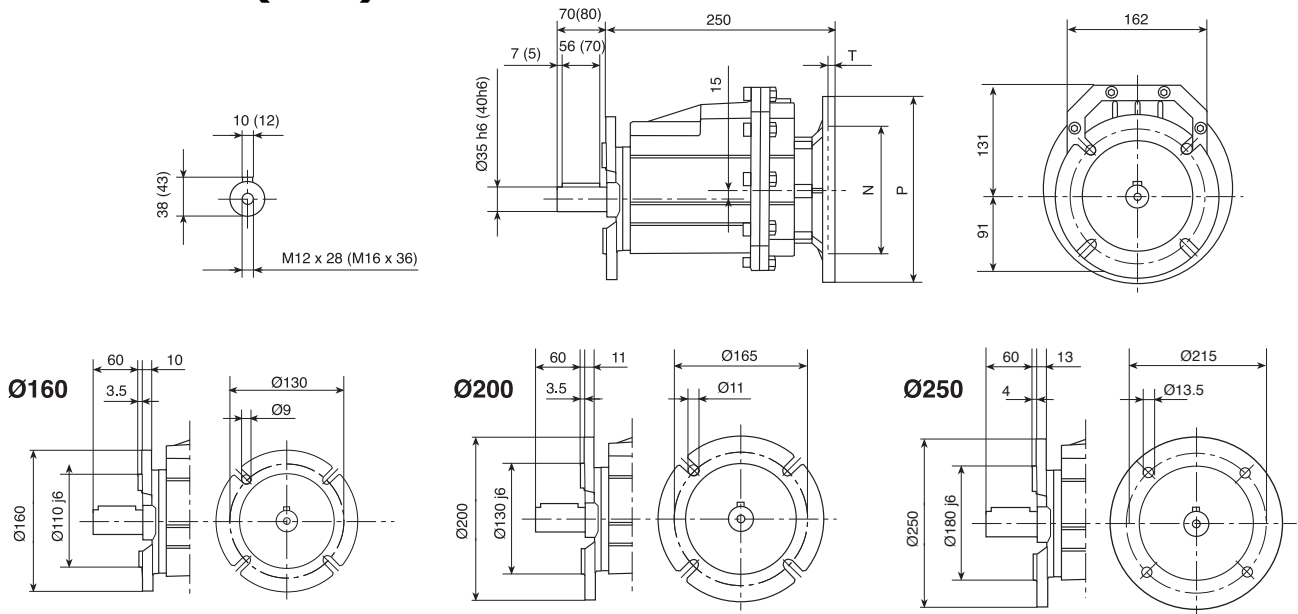


ATRC 042 H (IEC)

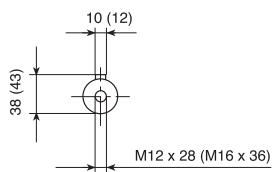
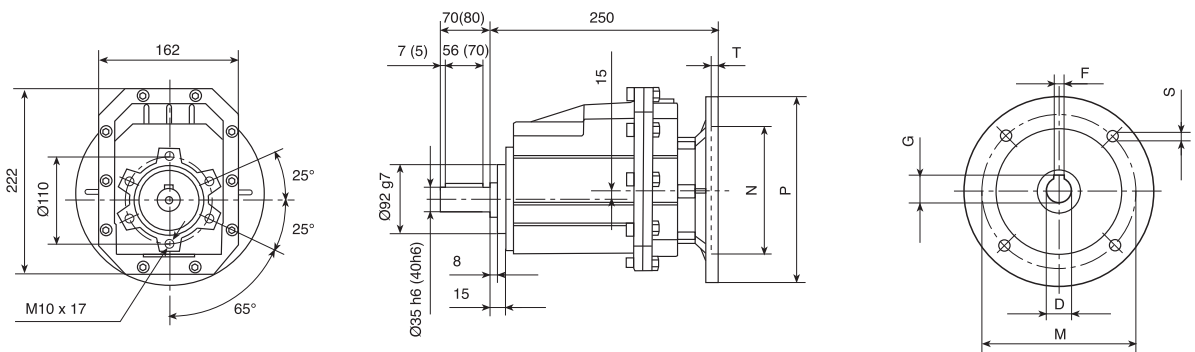


Тип	H	U	V	V1	V2	V3	W	X	X1	Z
B04	115	23,5	130	-	170	-	14	168	205	20
B05	130	19,5	149,5	-	180	-	14	185	215	20
M03	120	33	100	-	135	150	11	150	190	18
M04	120	35	110	-	170	185	14	150	230	20

ATRC 042 F (IEC)



ATRC 042 U (IEC)



	PAM	N	M	P	D	F	G	S	T
	IEC 80B5	130	165	200	19	6	21,8	11	5
	IEC 80B14	80	100	120	19	6	21,8	7	5
	IEC 90B5	130	165	200	24	8	27,3	11	5
	IEC 90B14	95	115	140	24	8	27,3	9	5
	IEC 100/112B5	180	215	250	28	8	27,3	13,5	5
	IEC 100/112B14	110	130	160	28	8	31,3	9	5