

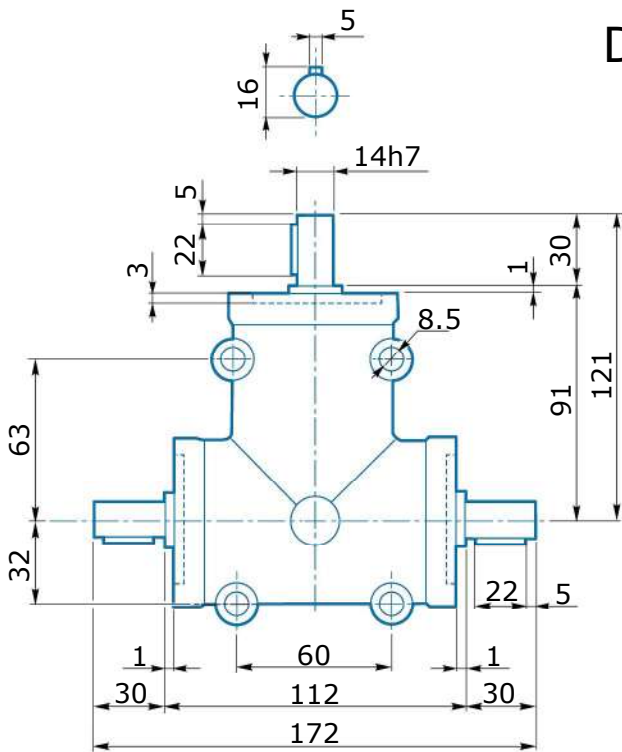
ZR 14

Technical data

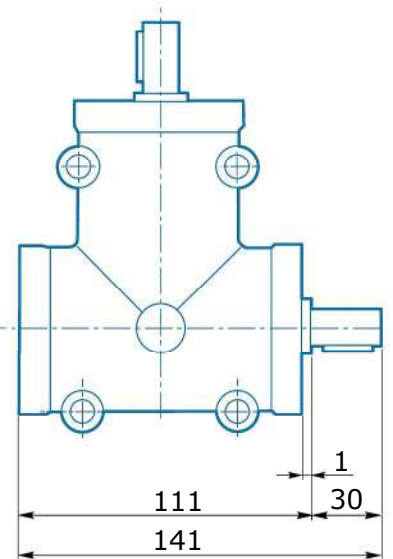
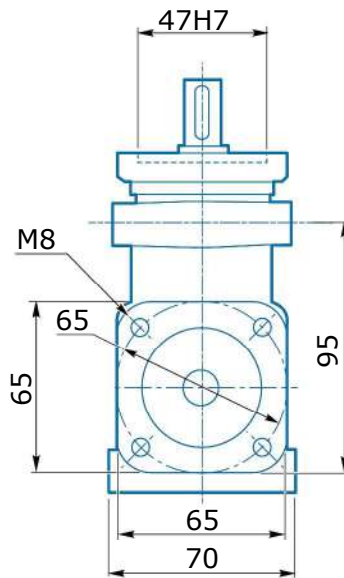
Type	i	2800 (min1)				1400 (min1)				900 (min1)				700 (min1)				RD	Kg
		Max.*		Norm.		Max.*		Norm.		Max.*		Norm.		Max.*		Norm.			
		T2m* (Nm)	P1m* (kW)	T2n (Nm)	P1n (kW)	T2m* (Nm)	P1m* (kW)	T2n (Nm)	P1n (kW)	T2m* (Nm)	P1m* (kW)	T2n (Nm)	P1n (kW)	T2m* (Nm)	P1m* (kW)	T2n (Nm)	P1n (kW)		
ZR14	1	5,7	1,7	2,5	0,75	8,4	1,2	3,7	0,55	9,8	0,98	3,8	0,37	12,4	0,75	3,6	0,25	0,97	2
	2	5,8	0,9	2,5	0,37	6,7	0,94	3,7	0,25	8,0	0,80	4,0	0,25	10,2	0,62	3,6	0,12	0,97	
	3	6,0	0,63	2,5	0,25	7,0	0,35	3,9	0,18	8,0	0,25	4,2	0,12	8,5	0,52	3,6	0,06	0,97	

Important! * The maximum permissible values are indicated, for a quiet operating mode, with safety clutches and a soft start.

Dimensions

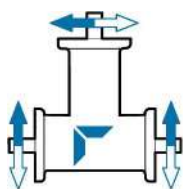


ZR 14 T

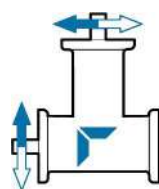


ZR 14 LA/LB

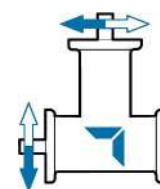
Shafts position and direction of rotation



T



LA



LB