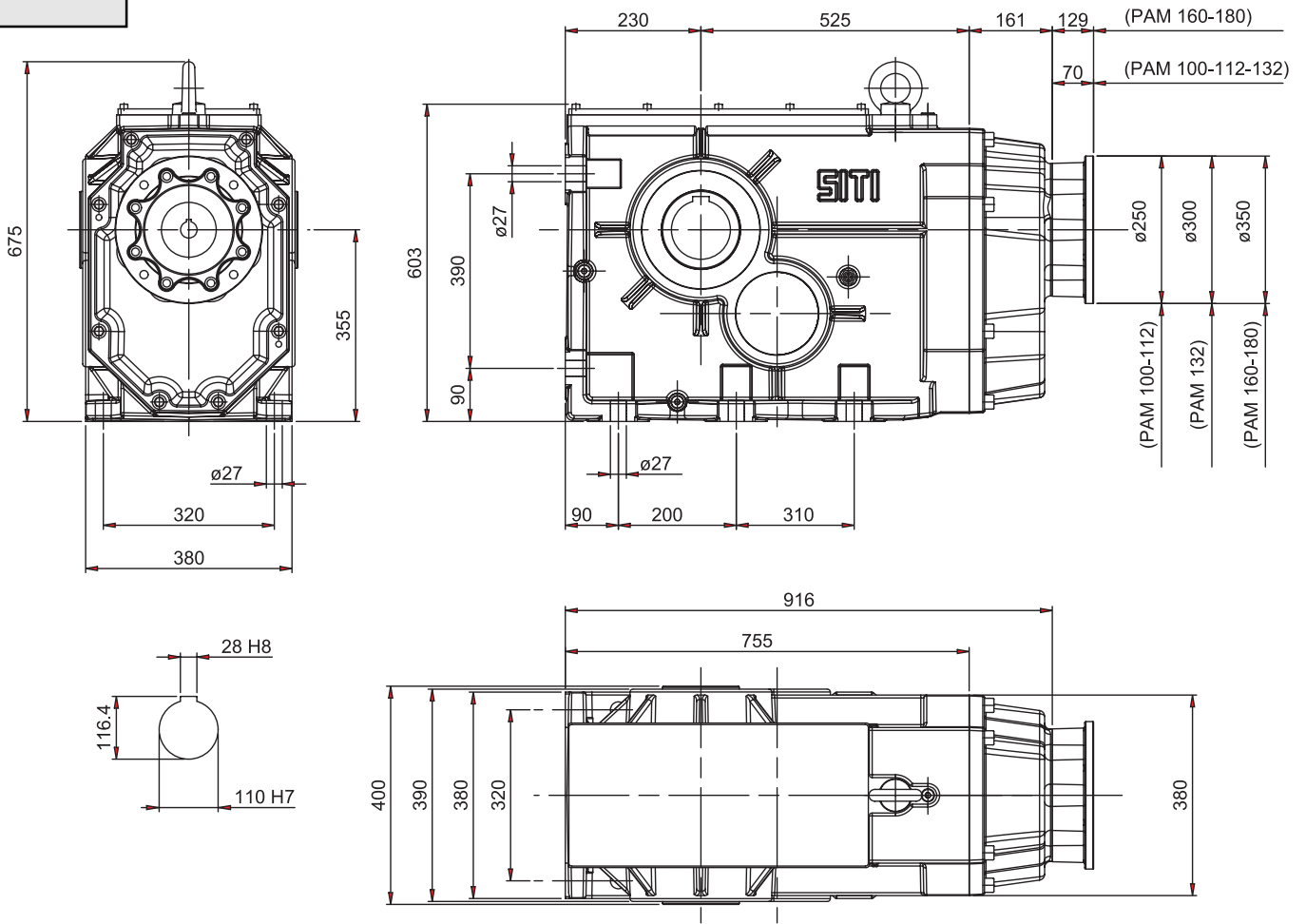
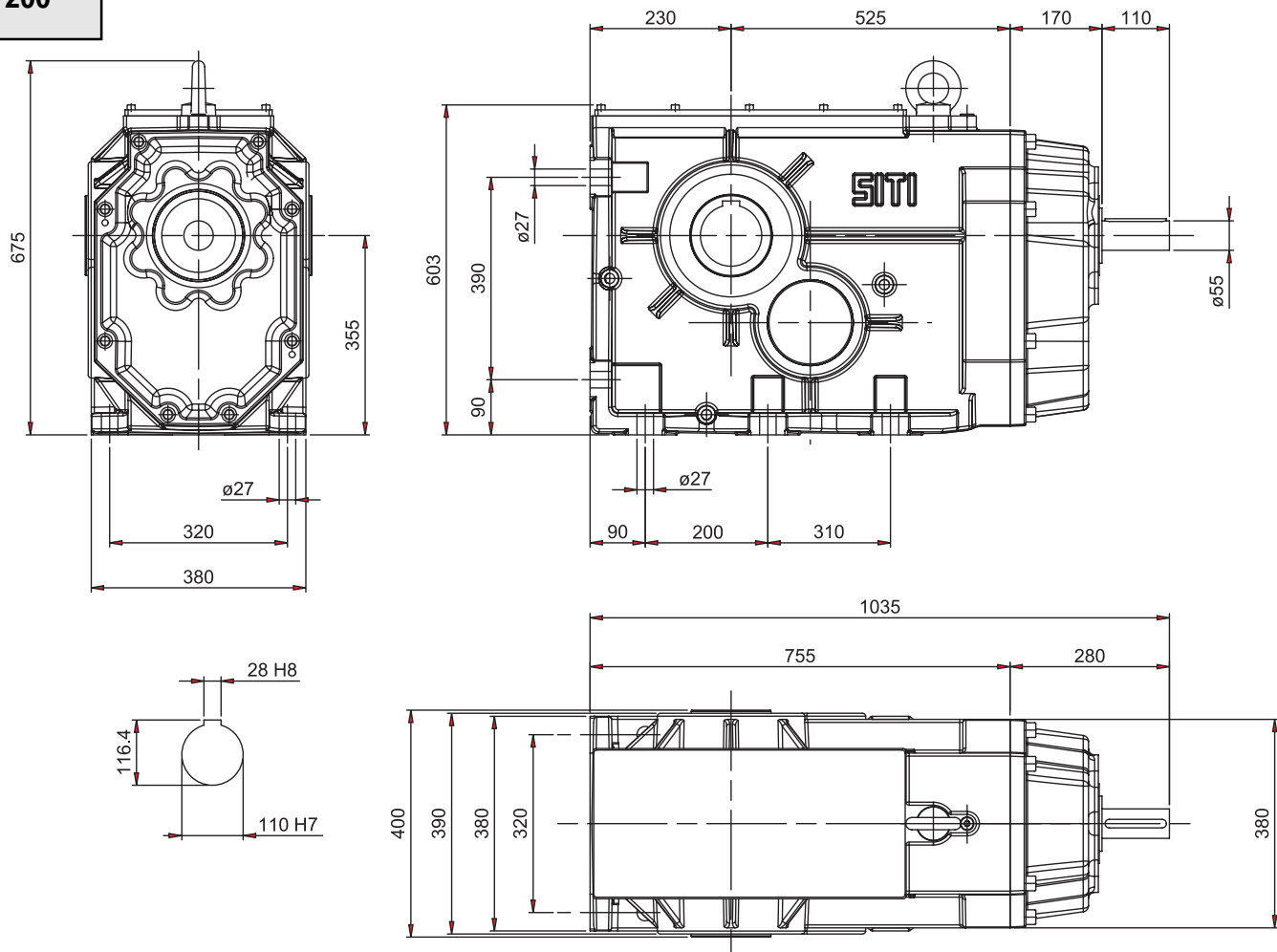


MBHGC 200



BH 200



PAM DISPONIBILI

PAM VERSIONS AVAILABLE

VERFÜGBARE "PAM" AUSFÜHRUNGEN

| i | MBHGC | | | | |
|--------|-------|-----|-----|-----|-----|
| | 100 | 112 | 132 | 160 | 180 |
| 7,81 | | | | | |
| 9,20 | | | | | |
| 10,11 | | | | | |
| 12,28 | | | | | |
| 14,46 | | | | | |
| 15,89 | | | | | |
| 19,32 | | | | | |
| 23,80 | | | | | |
| 25,54 | | | | | |
| 30,36 | | | | | |
| 36,19 | | | | | |
| 43,66 | | | | | |
| 54,35 | | | | | |
| 66,79 | | | | | |
| 72,27 | | | | | |
| 79,34 | | | | | |
| 88,54 | | | | | |
| 105,13 | | | | | |
| 124,23 | | | | | |
| 139,70 | | | | | |
| 153,46 | | | | | |

I motori grandezza 200, 225 e 250 possono essere montati solo in tipologia B3, con giunto senza campana.

Motor size 200, 225 and 250 can be mounted only in B3 type, with coupling but without bell-housing.

Die Motoren in Baugröße 200, 225 und 250 können nur in Bauform B3 eingebaut werden; mit Kupplung aber ohne Glocke.