

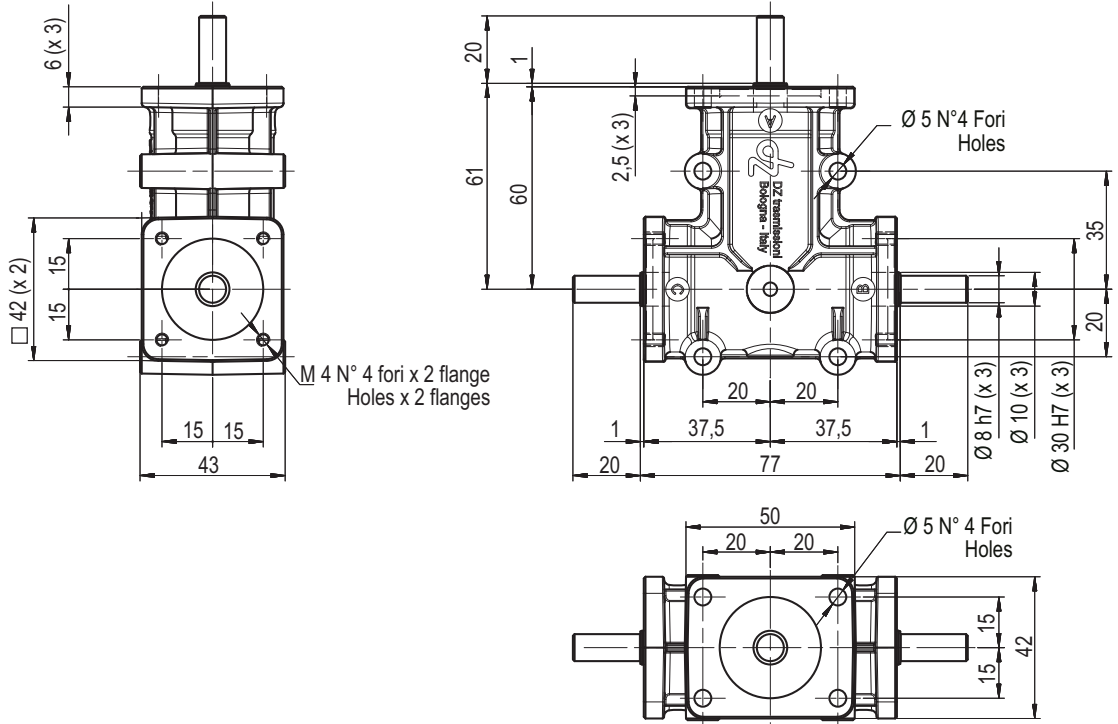
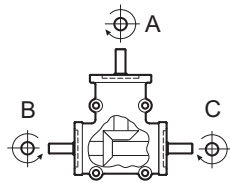
# dz trasmissioni



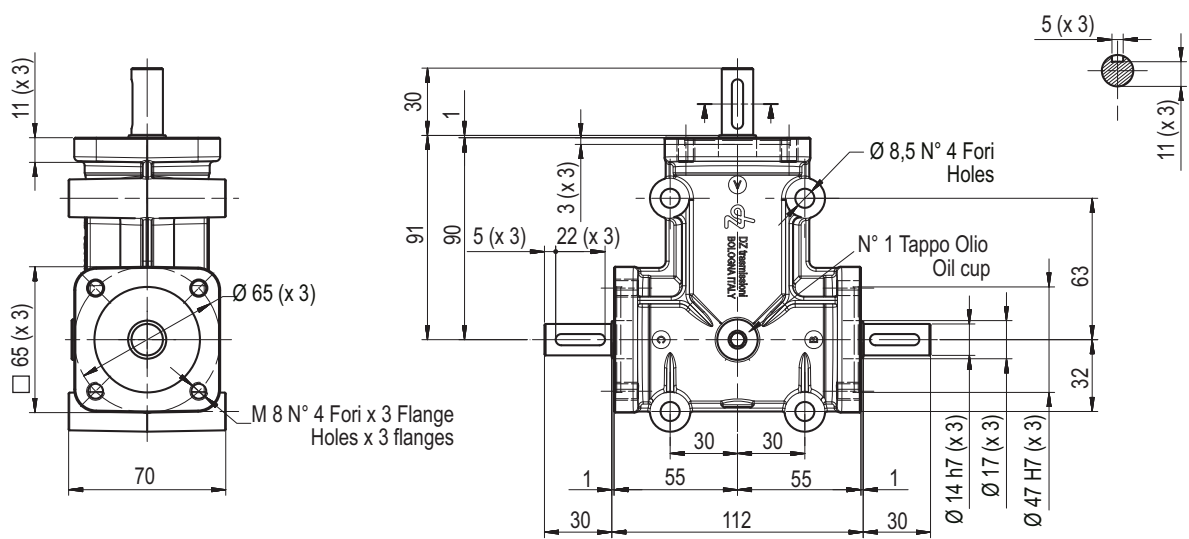
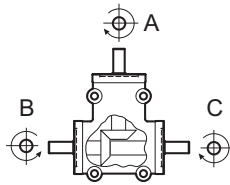
**Serie / Series Zp**



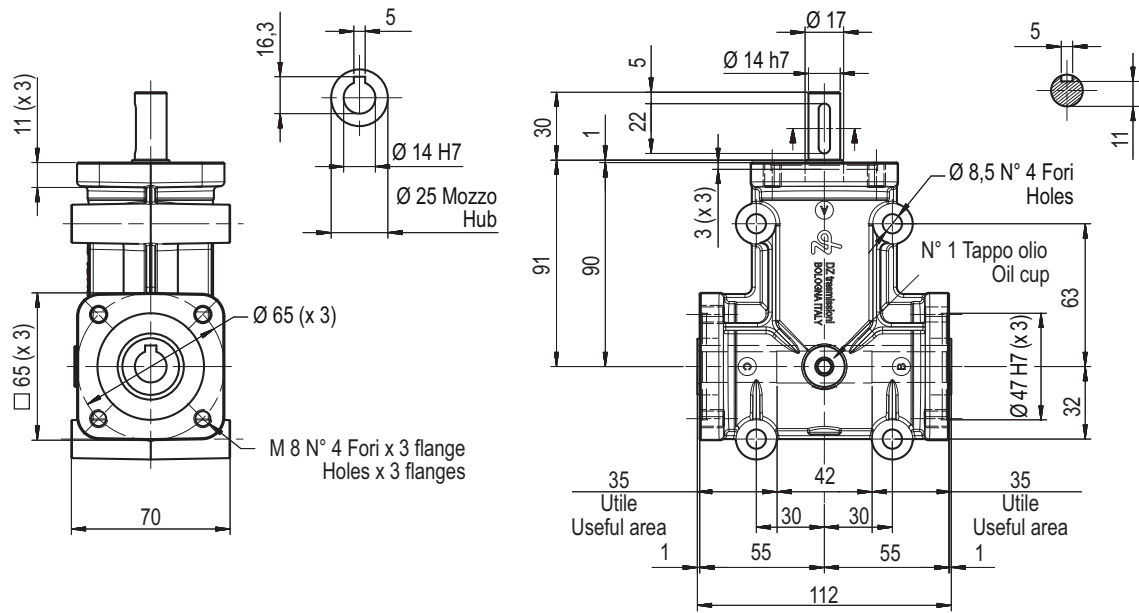
MOD.	ZP	Rapp.	Entrata	Uscita	Modello	Peso
MISURA SIZE	1	Ratio	In	Out	Model	Weight
		1/1	A	B	ZP 10S-4PAB-	Kg 0.6
		1/1	A	C	ZP 10FS4PAC-	
		1/2	A	B	ZP 12S-4PAB-	
		1/2	A	C	ZP 12FS4PAC-	
		1/1	A	B - C	ZP 11-4PABC	
		1/2	A	B - C	ZP 13-4PABC	



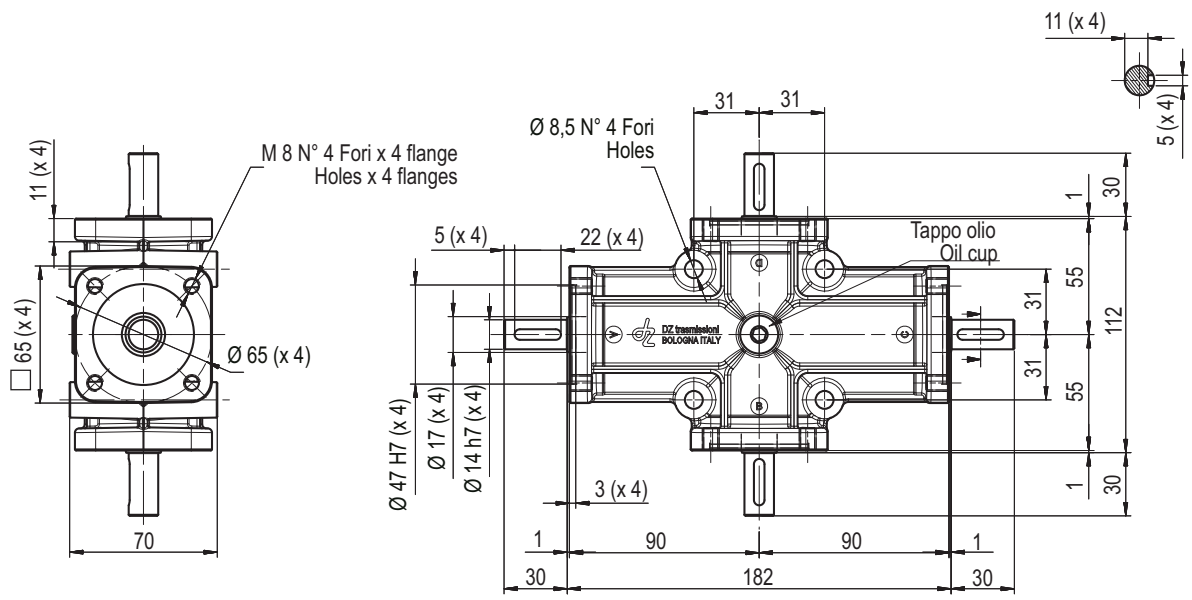
MOD.	ZP	Rapp.	Entrata	Uscita	Modello	Peso
MISURA SIZE	2	Ratio	In	Out	Model	Weight
		1/1	A	B	ZP 20S-4PAB-	Kg 2
		1/1	A	C	ZP 20FS4PAC-	
		1/2	A	B	ZP 22S-4PAB-	
		1/2	A	C	ZP 22FS4PAC-	
		1/3	A	B	ZP 24S-4PAB-	
		1/3	A	C	ZP 24FS4PAC-	
		1/1	A	B - C	ZP 21-4PABC	
		1/2	A	B - C	ZP 23-4PABC	
		1/3	A	B - C	ZP 25-4PABC	



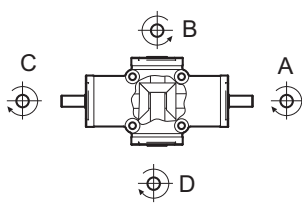

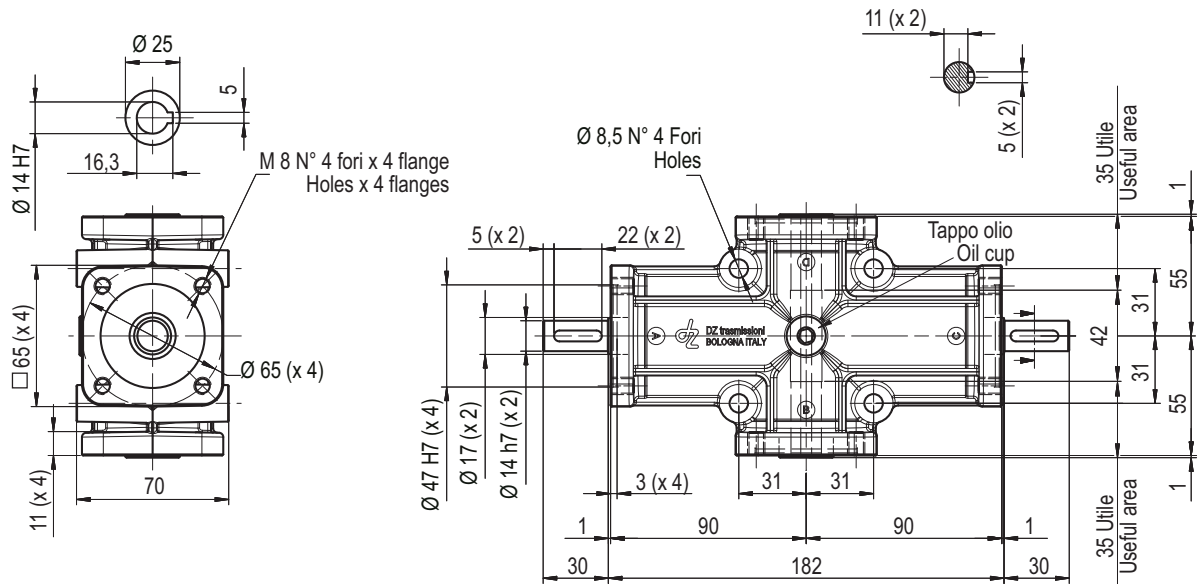
MOD.	ZP	Rapp.	Entrata	Uscita	Modello	Peso
MISURA	2	Ratio	In	Out	Model	Weight
		1/1	A	B - C	ZP 211-4P3V-	Kg 2
		1/2	A	B - C	ZP 213-4P3V-	
		1/3	A	B - C	ZP 215-4P3V-	



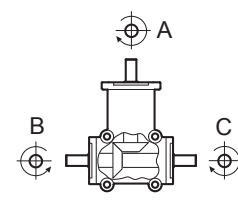

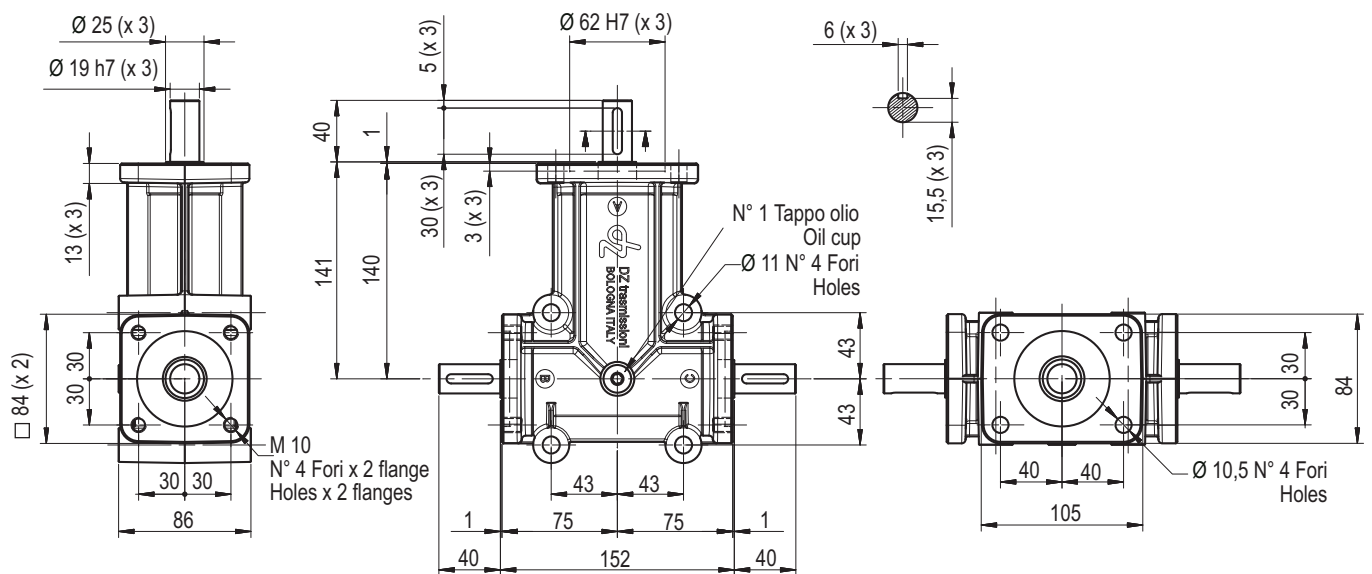
MOD.	ZP	Rapp.	Entrata	Uscita	Modello	Peso
MISURA	2	Ratio	In	Out	Model	Weight
		1/1	A	B - C	ZP 220S-4PABC	Kg 3.2
		1/1	A	C - D	ZP 220FS4PACD	
		1/2	A	B - C	ZP 222S-4PABC	
		1/2	A	C - D	ZP 222FS4PACD	
		1/3	A	B - C	ZP 224S-4PABC	
		1/3	A	C - D	ZP 224FS4PACD	
		1/1	A	B - C - D	ZP 221-4PABCD	
		1/2	A	B - C - D	ZP 223-4PABCD	
		1/3	A	B - C - D	ZP 225-4PABCD	



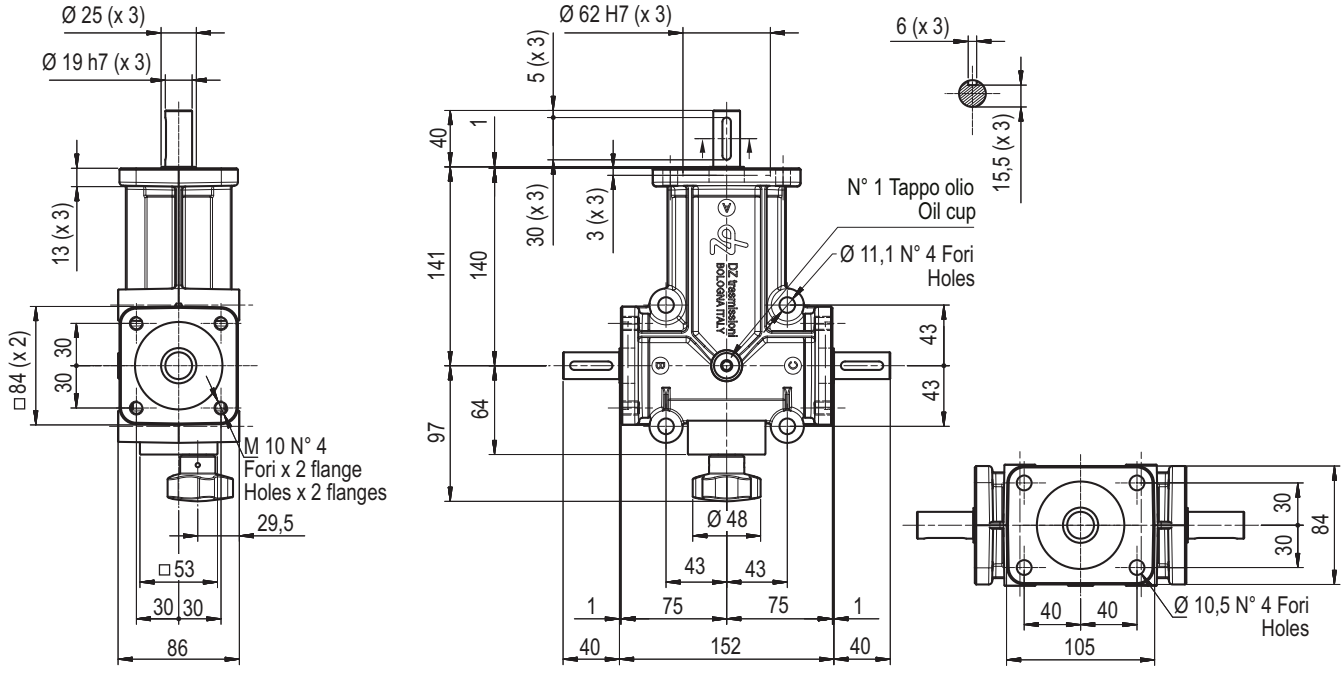
MOD.	ZP	Rapp.	Entrata	Uscita	Modello	Peso
MISURA SIZE	2	Ratio	In	Out	Model	Weight
		1/1	A	B - C - D	ZP 211-4P4V-	Kg 3
		1/2	A	B - C - D	ZP 213-4P4V-	
		1/3	A	B - C - D	ZP 215-4P4V-	

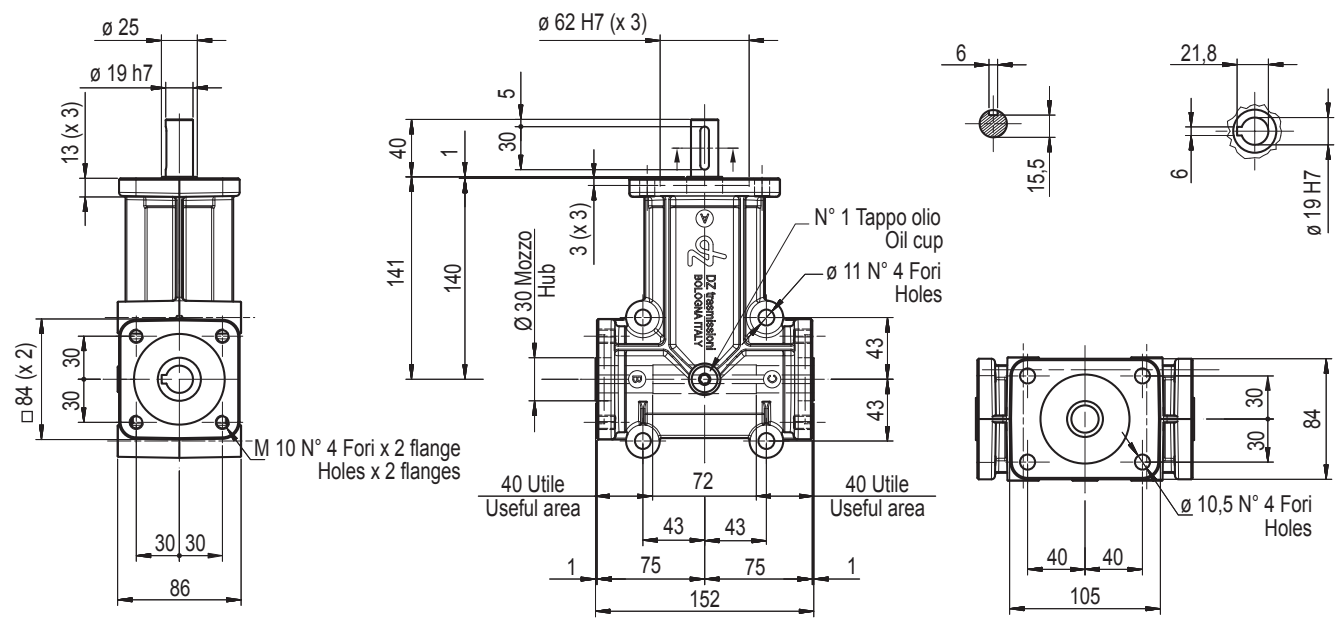
MOD.	ZP	Rapp.	Entrata	Uscita	Modello	Peso
MISURA SIZE	3	Ratio	In	Out	Model	Weight
		1/1	A	B	ZP 30S-4PAB-	Kg 4.5
		1/1	A	C	ZP 30FS4PAC-	
		1/2	A	B	ZP 32S-4PAB-	
		1/2	A	C	ZP 32FS4PAC-	
		1/3	A	B	ZP 34S-4PAB-	
		1/3	A	C	ZP 34FS4PAC-	
		1/1	A	B - C	ZP 31-4PABC	
		1/2	A	B - C	ZP 33-4PABC	
		1/3	A	B - C	ZP 35-4PABC	

<b>MOD.</b>	<b>ZP</b>		<b>Rapp.</b>	<b>Entrata</b>	<b>Uscita</b>	<b>Modello</b>	<b>Peso</b>
<b>MISURA SIZE</b>	<b>3</b>		<i>Ratio</i>	<i>In</i>	<i>Out</i>	<i>Model</i>	<i>Weight</i>
<b>INVERTITORE REVERSER</b>			1/1	A	B	ZP 30 – INVERT	Kg 4.5
			1/1	A	B – C	ZP 31 – INVERT	



<b>MOD.</b>	<b>ZP</b>		<b>Rapp.</b>	<b>Entrata</b>	<b>Uscita</b>	<b>Modello</b>	<b>Peso</b>
<b>MISURA SIZE</b>	<b>3</b>		<i>Ratio</i>	<i>In</i>	<i>Out</i>	<i>Model</i>	<i>Weight</i>
			1/1	A	B – C	ZP 311 – 4P3V –	Kg 4.5
			1/2	A	B – C	ZP 313 – 4P3V –	
		1/3	A	B – C	ZP 315 – 4P3V –		





MOD.	ZP	Rapp.	Entrata	Uscita	Modello	Peso
					Ratio	In
MISURA SIZE	4					Kg 4.5
			A	B	ZP 40S-4PAB-	
			A	C	ZP 40FS4PAC-	
			A	B	ZP 42S-4PAB-	
			A	C	ZP 42FS4PAC-	
			A	B	ZP 44S-4PAB-	
			A	C	ZP 44FS4PAC-	
			A	B - C	ZP 41--4PABC	
			A	B - C	ZP 43--4PABC	
			A	B - C	ZP 45--4PABC	

