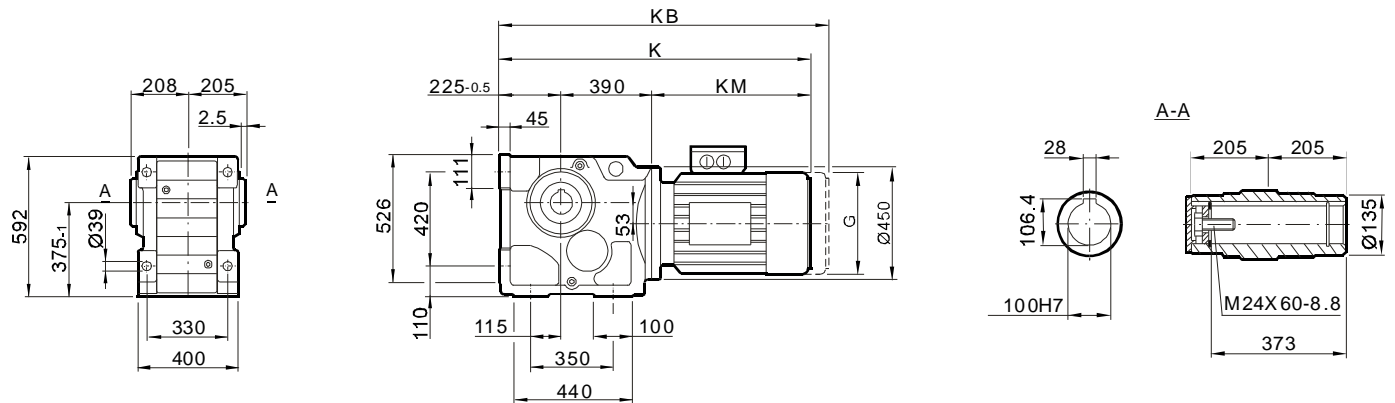


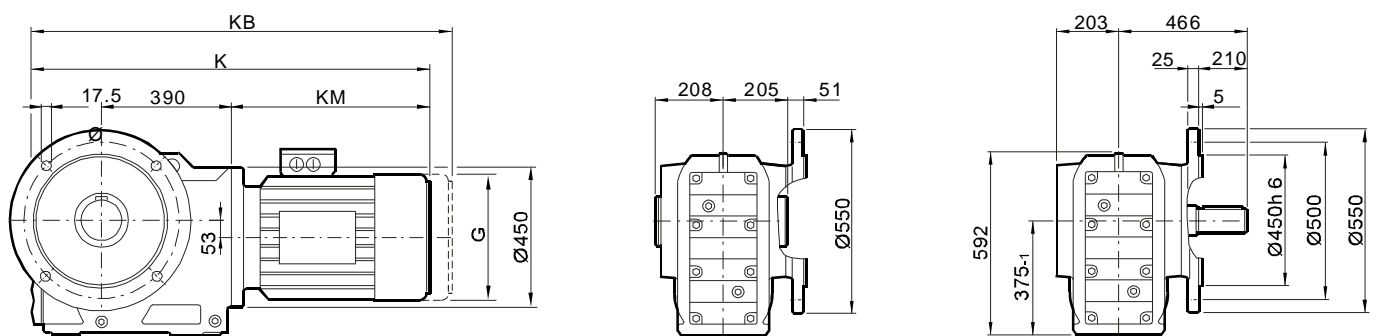
**KAT 100**



**Motor frame**

Dimensions	132M	160M	160L	180	200	225	250 M	280S	280M
<b>G</b>	275	275	331	331	394	394	510	510	537
<b>G1</b>	230	230	258	258	285	289	397	397	382
<b>G1B</b>	230	230	258	258	285	289	397	397	382
<b>K</b>	996	1056	1103	1175	1223	1305	1395	1395	1521
<b>KB</b>	1108	1168	1259	1331	1379	1461	1580	1580	1732
<b>KM</b>	381	441	488	560	608	690	780	780	906

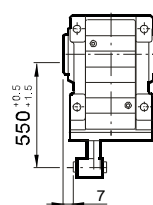
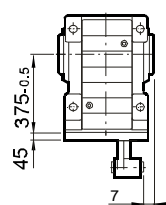
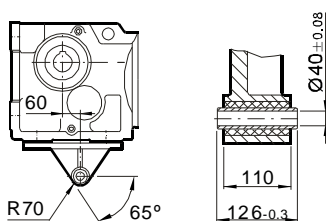
**KAT 100 F**



**TORQUE ARM**

**TA-L**

**TA-R**



**SINGLE LOW SPEED SHAFTS**

