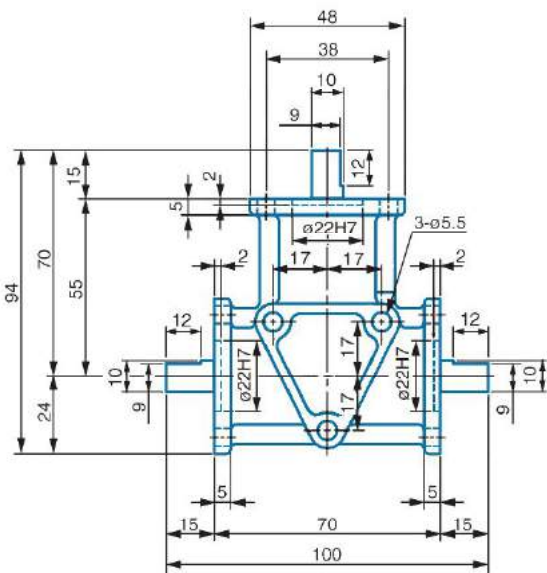


ZR10

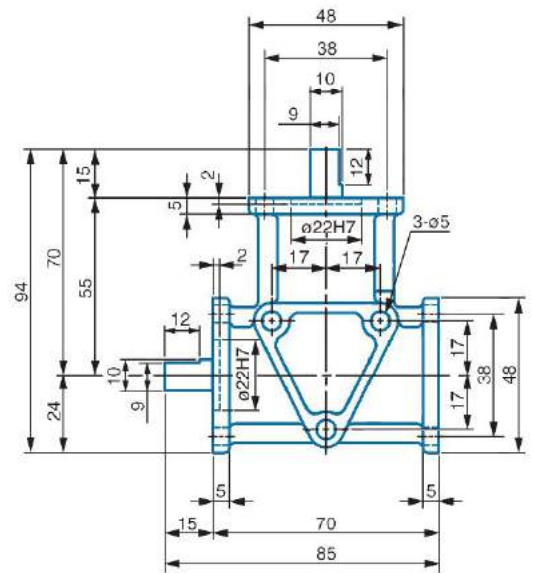
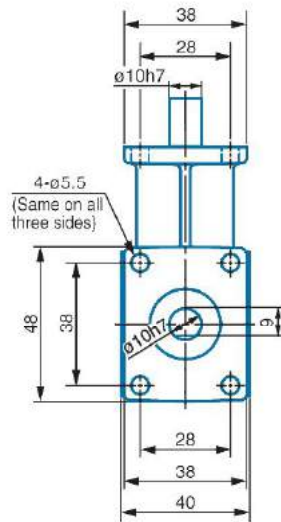
Technical data

Type	Ratio i	2800 n2 (min1)		1400 n2 (min1)		900 n2 (min1)		700 n2 (min1)		RD	Kg
		M2 [Nm]	P1 (kW)	M2 [Nm]	P1 (kW)	M2 [Nm]	P1 (kW)	M2 [Nm]	P1 (kW)		
ZR10	1	1.47	0.45	1.96	0.31	2.55	0.24	2.94	0.18	0.97	0.4
	2	1.56	0.24	1.76	0.14	1.76	0.08	1.76	0.06	0.97	

Dimensions

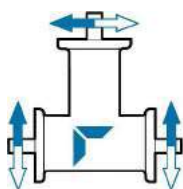


ZR 10 T

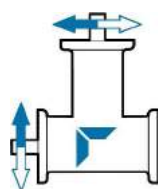


ZR 10 LA/LB

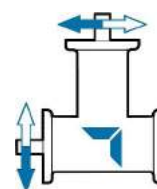
Shafts position and direction of rotation



T



LA



LB